

Criterion II – Teaching–Learning and Evaluation

Student Satisfaction Survey on Teaching Learning Process

Following are questions for online student satisfaction survey regarding teaching learning process.

1. How much of the syllabus was covered in the class?
 - 4 – 85 to 100%
 - 3 – 70 to 84%
 - 2 – 55 to 69%
 - 1– 30 to 54%
 - 0 –Below 30%

2. How well did the teachers prepare for the classes?
 - 4 –Thoroughly
 - 3 – Satisfactorily
 - 2 – Poorly
 - 1 – Indifferently
 - 0 – Won't teach at all

3. How well were the teachers able to communicate?
 - 4 – Always effective
 - 3 – Sometimes effective
 - 2 – Just satisfactorily
 - 1– Generally ineffective
 - 0– Very poor communication

4. The teacher's approach to teaching can best be described as
 - 4– Excellent
 - 3 – Very good
 - 2 – Good
 - 1 – Fair
 - 0– Poor

5. Fairness of the internal evaluation process by the teachers.
 - 4 – Always fair
 - 3 – Usually fair
 - 2 – Sometimes unfair
 - 1 – Usually unfair
 - 0– Unfair

6. Was your performance in assignments discussed with you?
 - 4 – Every time
 - 3 – Usually
 - 2 – Occasionally/Sometimes
 - 1 – Rarely
 - 0– Never

7. The institute takes active interest in promoting internship, student exchange, field visit opportunities for students.
 - 4 – Regularly
 - 3 – Often
 - 2 – Sometimes
 - 1 – Rarely
 - 0– Never

8. The teaching and mentoring process in your institution facilitates you in cognitive, social and emotional growth.
 - 4 – Significantly
 - 3 – Very well
 - 2 – Moderately
 - 1 – Marginally
 - 0– Not at all

9. The institution provides multiple opportunities to learn and grow.
 - 4 – Strongly agree
 - 3 – Agree
 - 2 – Neutral
 - 1 – Disagree
 - 0– Strongly disagree

10. Teachers inform you about your expected competencies, course outcomes and programme outcomes.

- 4 – Every time
- 3 – Usually
- 2 – Occasionally/Sometimes
- 1 – Rarely
- 0 – Never

11. Your mentor does a necessary follow-up with an assigned task to you.

- 4 – Every time
- 3 – Usually
- 2 – Occasionally/Sometimes
- 1 – Rarely
- 0 – I don't have a mentor

12. The teachers illustrate the concepts through examples and applications.

- 4 – Every time
- 3 – Usually
- 2 – Occasionally/Sometimes
- 1 – Rarely
- 0 – Never

13. The teachers identify your strengths and encourage you with providing right level of challenges.

- 4 – Fully
- 3 – Reasonably
- 2 – Partially
- 1 – Slightly
- 0 – Unable to

14. Teachers are able to identify your weaknesses and help you to overcome them.

- 4 – Every time
- 3 – Usually
- 2 – Occasionally/Sometimes
- 1 – Rarely
- 0 – Never

15. The institution makes effort to engage students in the monitoring, review and continuous quality improvement of the teaching learning process.

- 4 – Strongly agree
- 3 – Agree
- 2 – Neutral
- 1 – Disagree
- 0 – Strongly disagree

16. The institute/ teachers use student centric methods, such as experiential learning, participative learning and problem solving methodologies for enhancing learning experiences.

- 4 – To a great extent
- 3 – Moderate
- 2 – Some what
- 1 – Very little
- 0 – Not at all

17. Teachers encourage you to participate in extracurricular activities.

- 4 – Strongly agree
- 3 – Agree
- 2 – Neutral
- 1 – Disagree
- 0 – Strongly disagree

18. Efforts are made by the institute/ teachers to inculcate soft skills, life skills and employability skills to make you ready for the world of work.

- 4 – To a great extent
- 3 – Moderate
- 2 – Some what
- 1 – Very little
- 0 – Not at all

19. What percentage of teachers use ICT tools such as LCD projector, Multimedia, etc. while teaching.

- 4 – Above 90%
- 3 – 70 – 89%
- 2 – 50 – 69%
- 1 – 30 – 49%
- 0 – Below 29%

20. The overall quality of teaching-learning process in your institute is very good.

4 –Strongly agree

3 – Agree

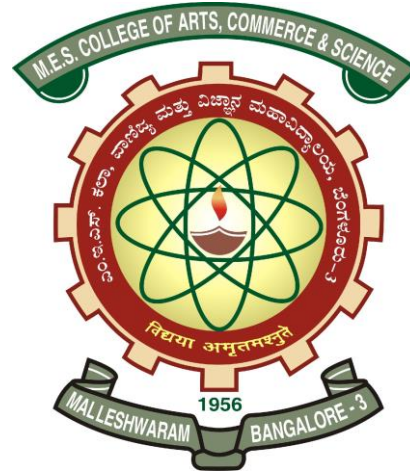
2 – Neutral

1 – Disagree

0 – Strongly disagree

M E S COLLEGE OF ARTS, COMMERCE AND SCIENCE

'Vidyasagara' Prof. M P L Sastry Road, 15th Cross Malleshwaram, Bengaluru 560003

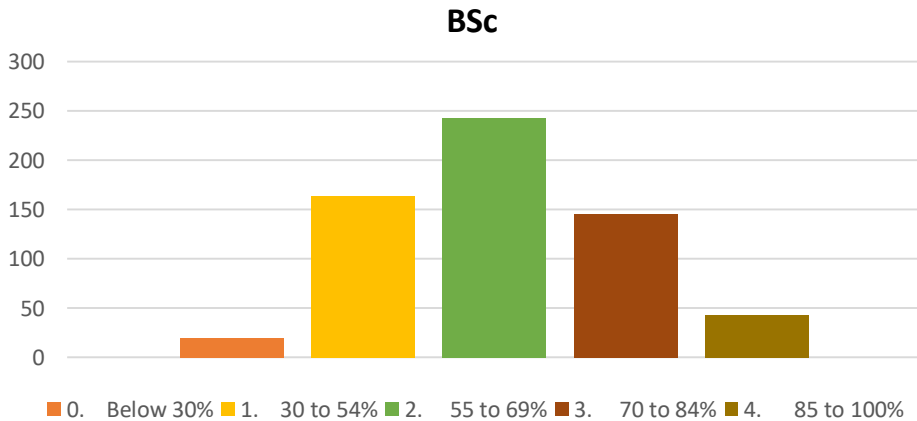
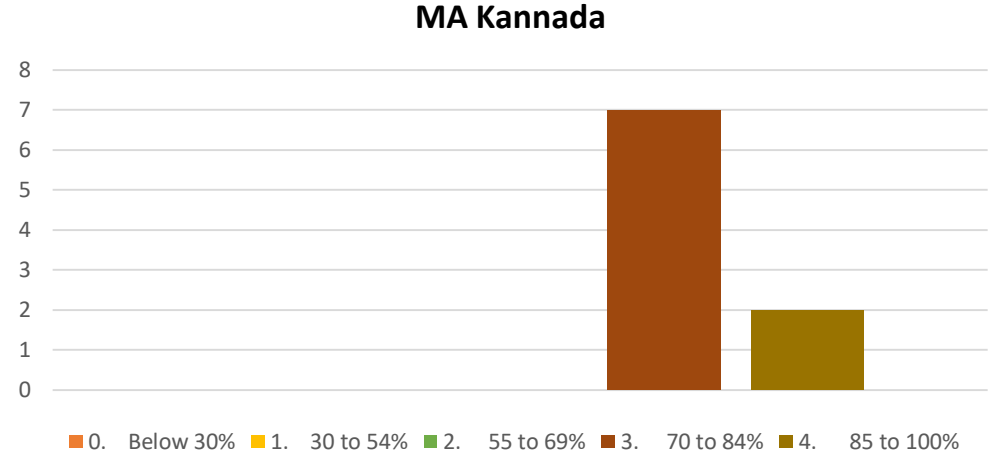
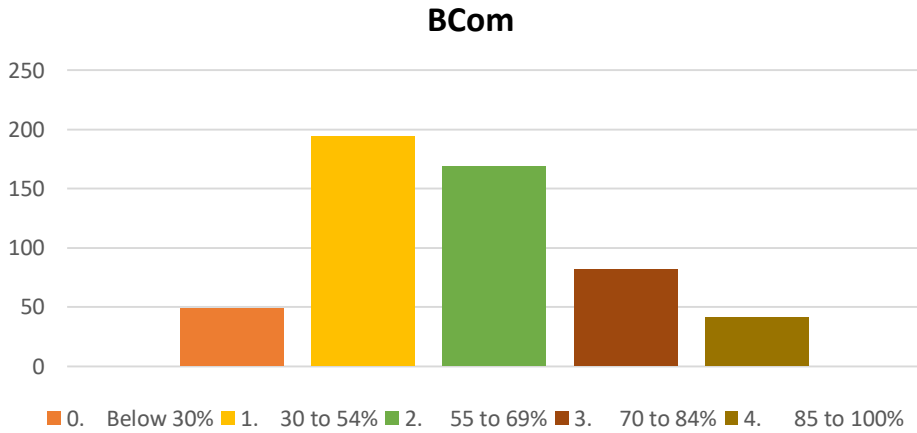
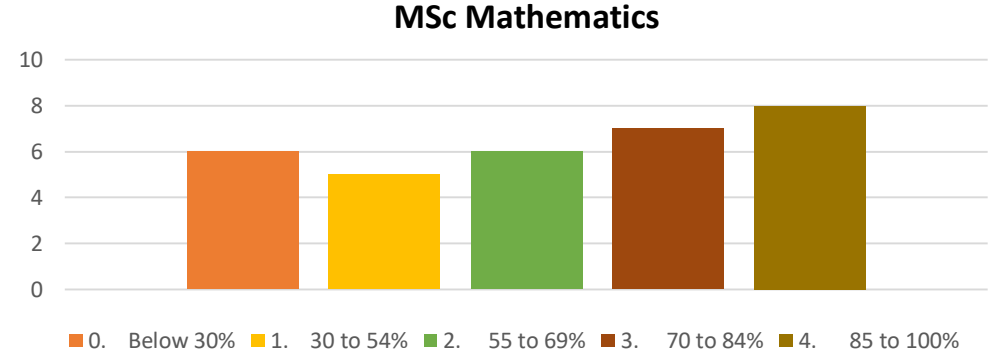
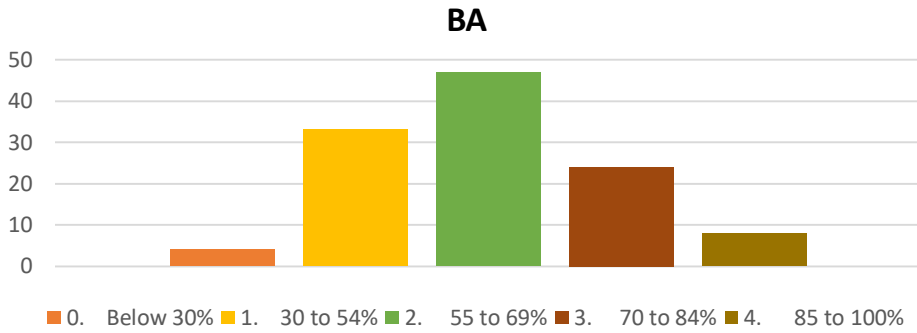


STUDENTS SATISFACTION SURVEY 2020 – 2021

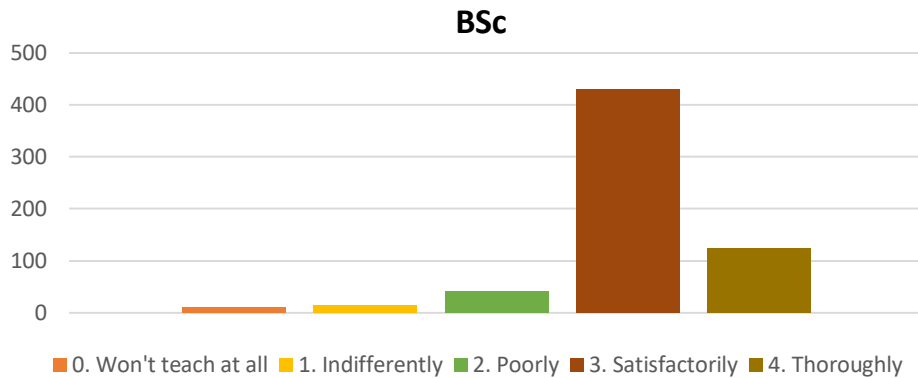
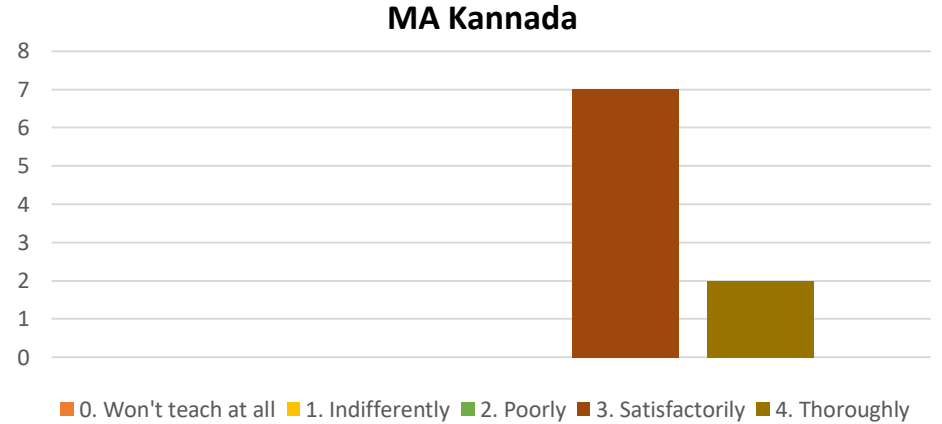
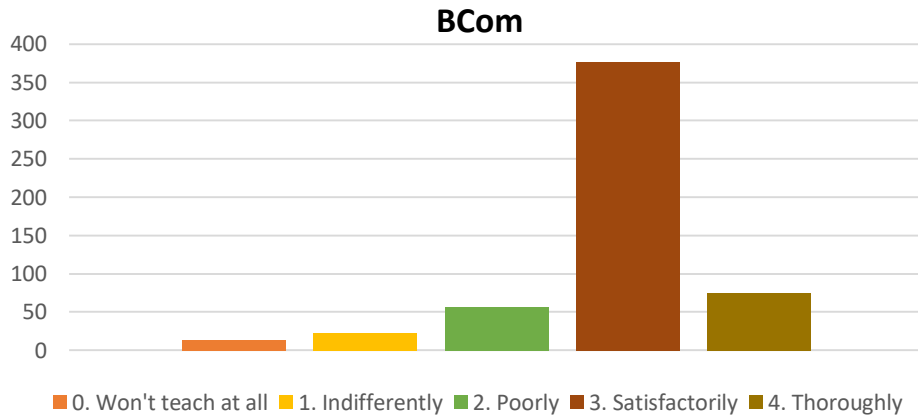
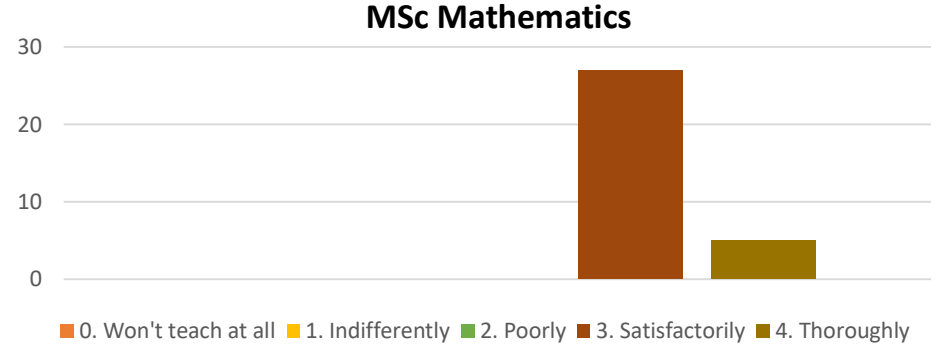
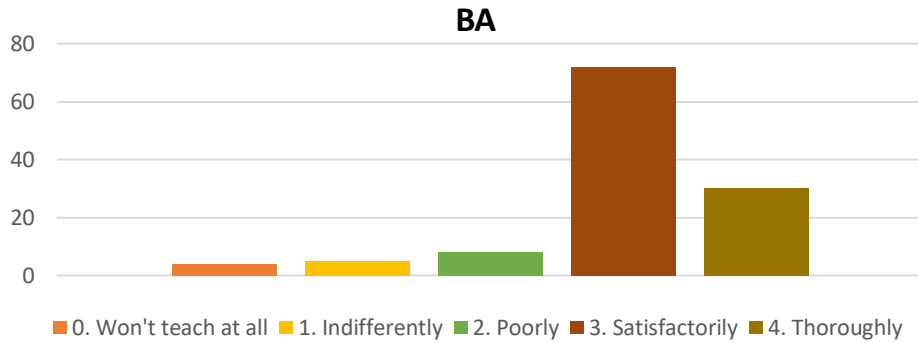
SSS 2020 - 2021

- The entire SSS 2020 -2021 was conducted using Google forms. There are 20 questions for which students must select the appropriate option and submit the feedback. Sufficient time was given to students to submit the feedback form.
- Total number of students participated in SSS 2020 – 2021 is 1307.
- The analysis for the SSS 2020 -2021 is divided into BA, BSc, BCom, MSc and MA streams.
- The y axis of the bar chart represents the no. of students who gave the feedback from the respective stream to the question displayed.
- The x axis of the bar chart represents the rating options given for each question given by students.

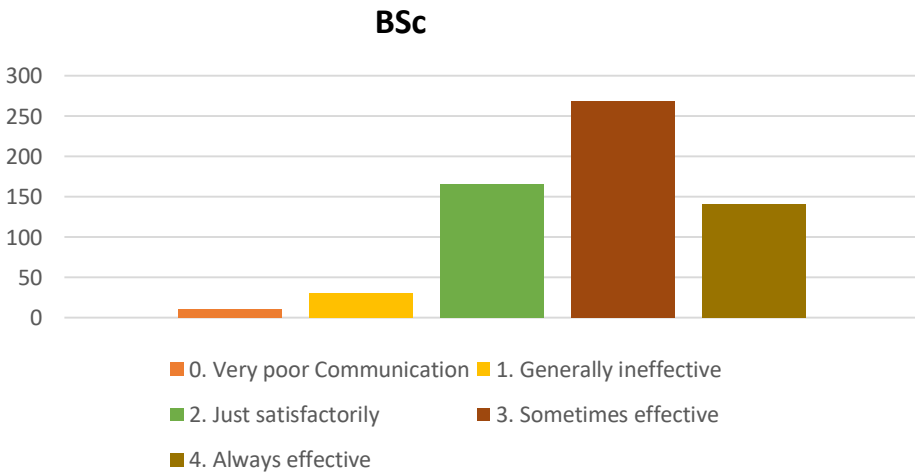
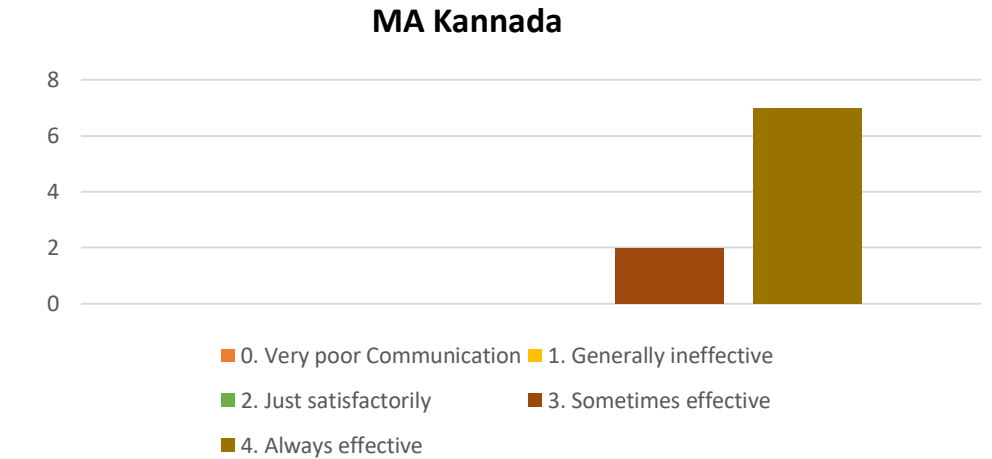
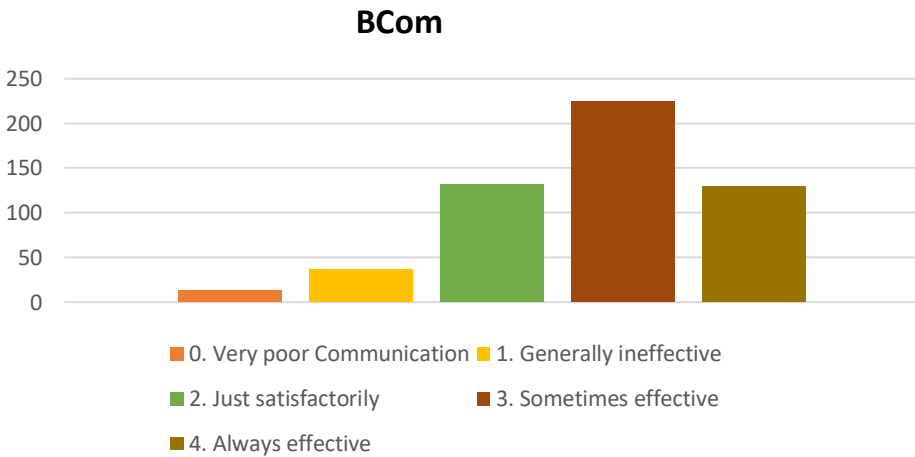
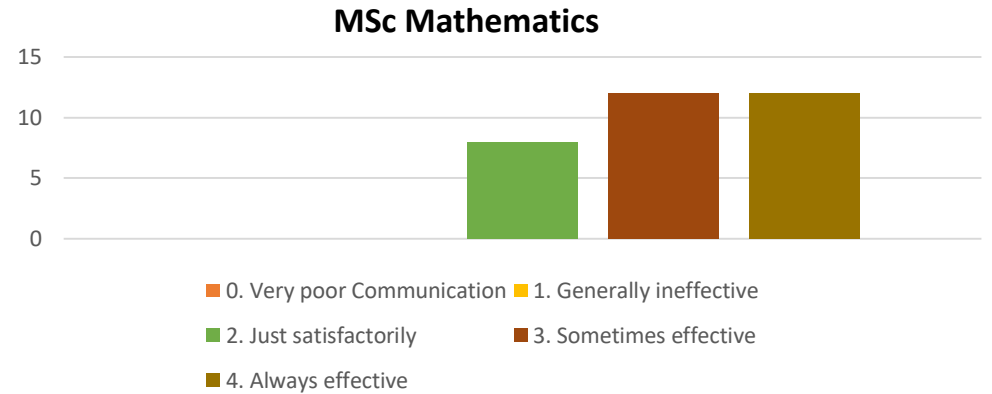
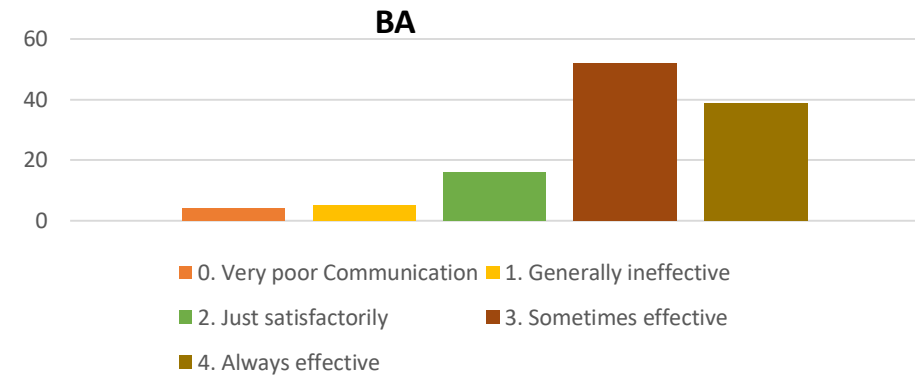
1) How much of the syllabus was covered in the class?



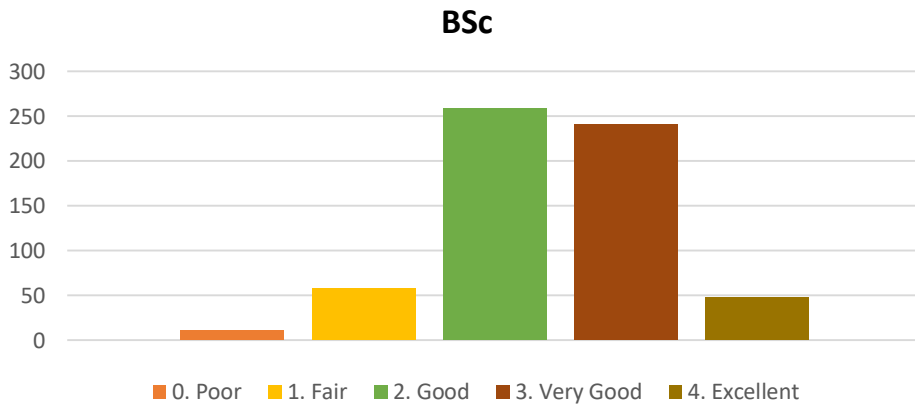
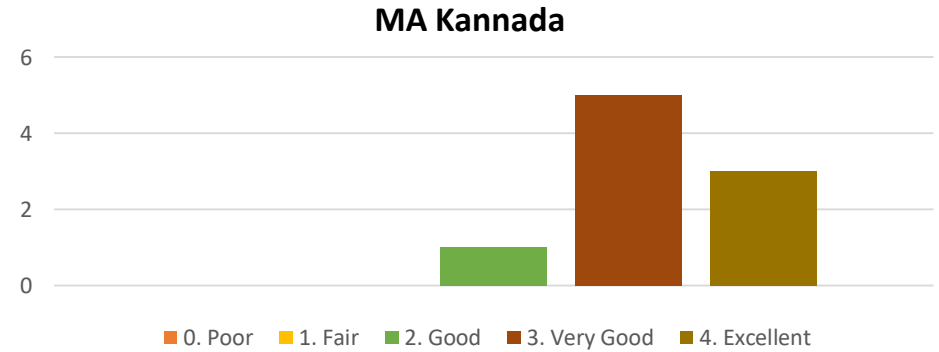
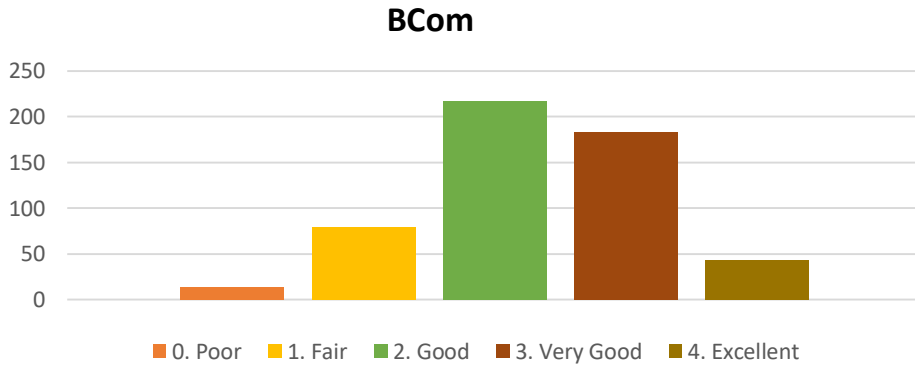
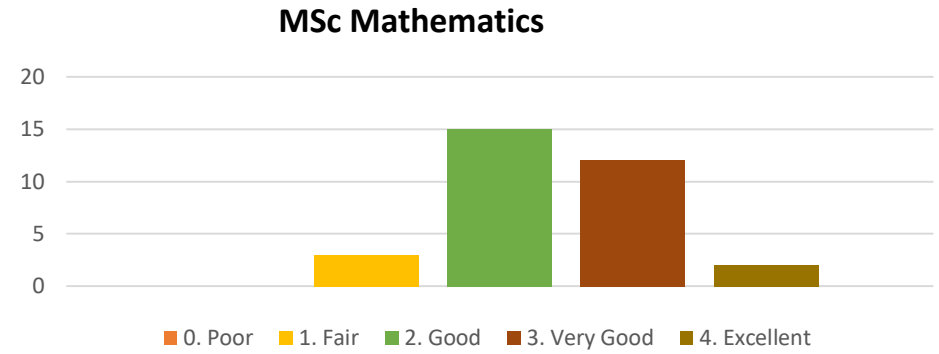
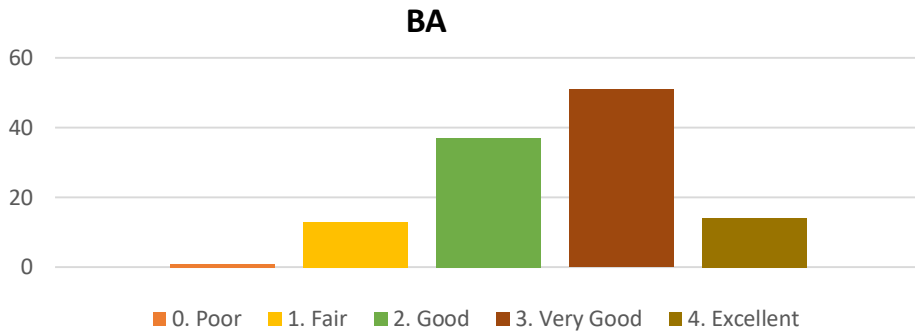
2) How well did the teachers prepare for the classes?



3) How well were the teachers able to communicate?

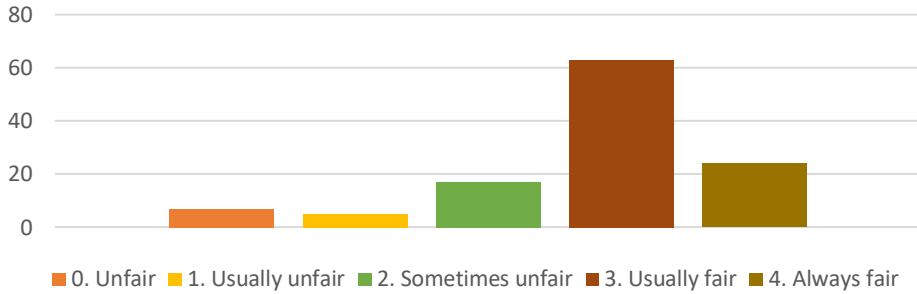


4) The teacher's approach to teaching can best be described as

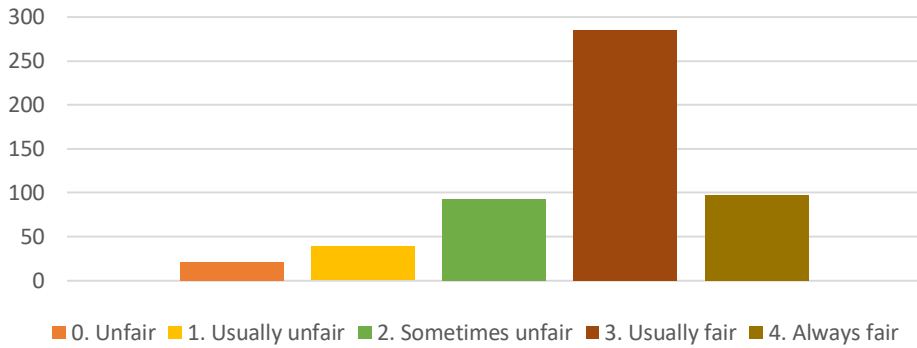


5) Was your performance in assignments discussed

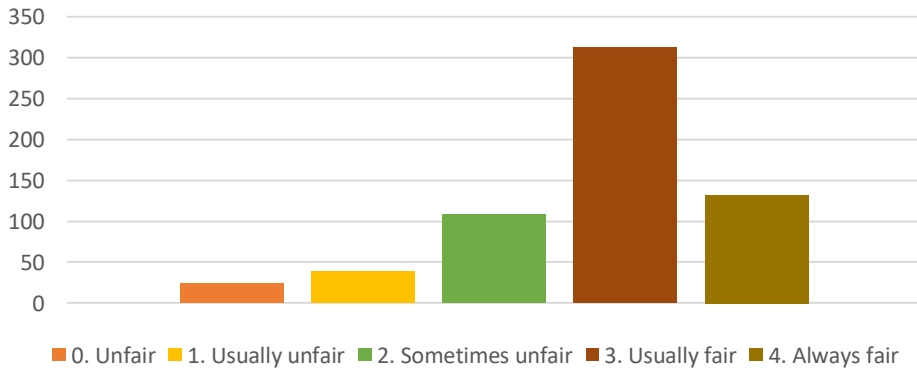
BA



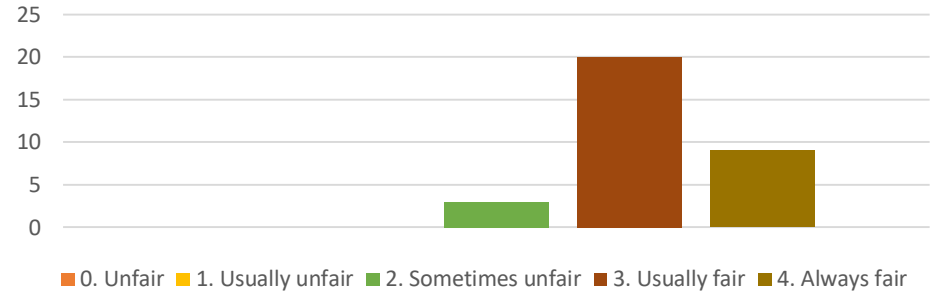
BCom



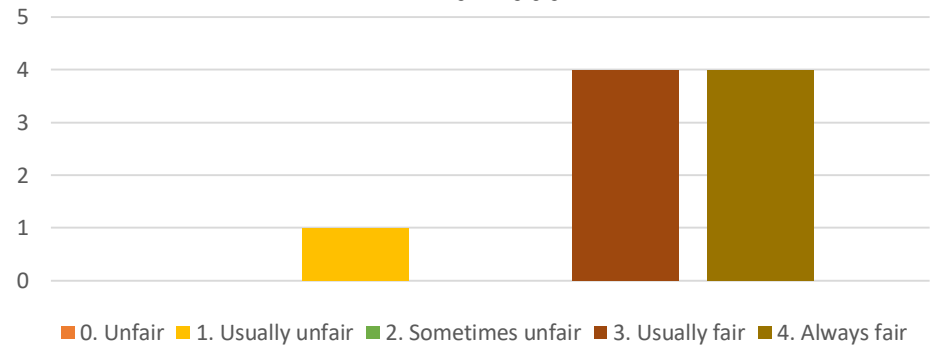
BSc



MSc Mathematics

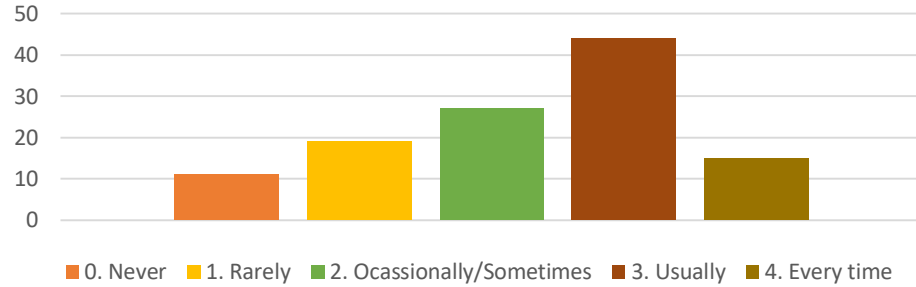


MA Kannada

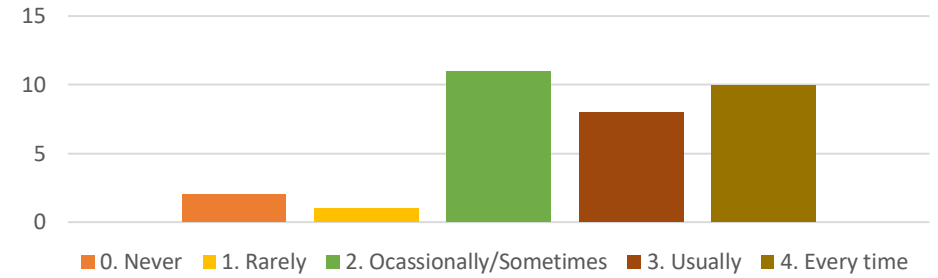


6) Was your performance in assignments discussed with you

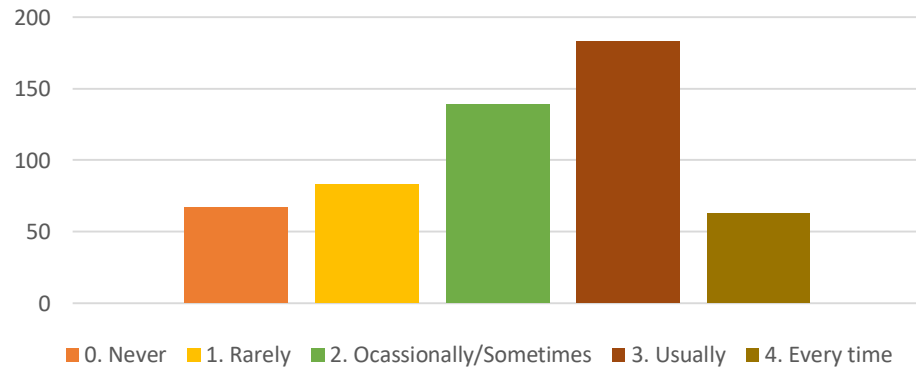
BA



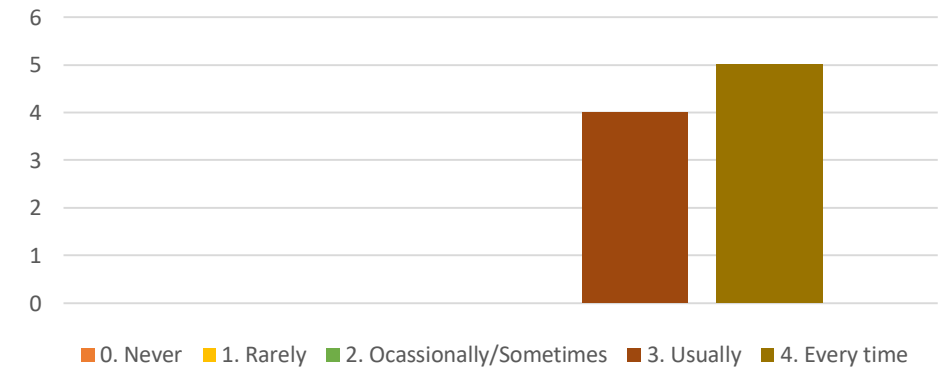
MSc Mathematics



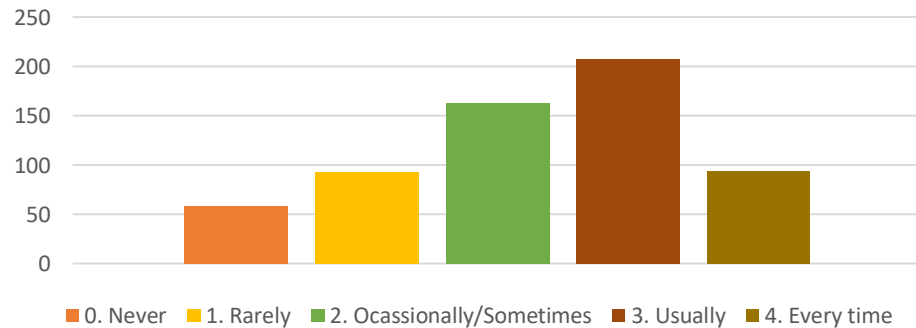
BCom



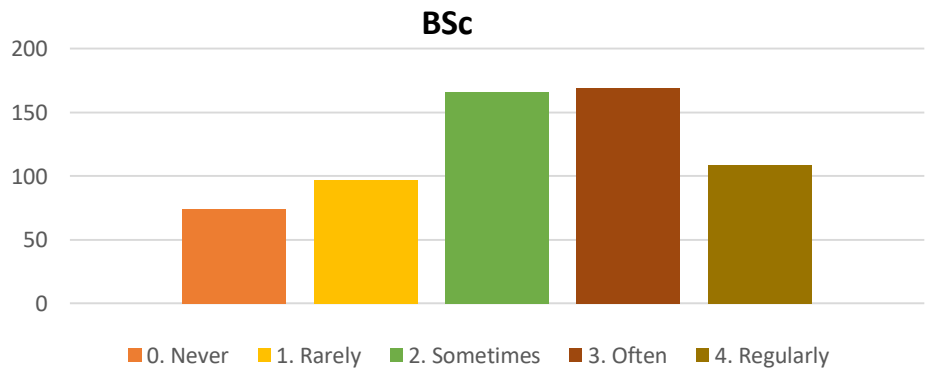
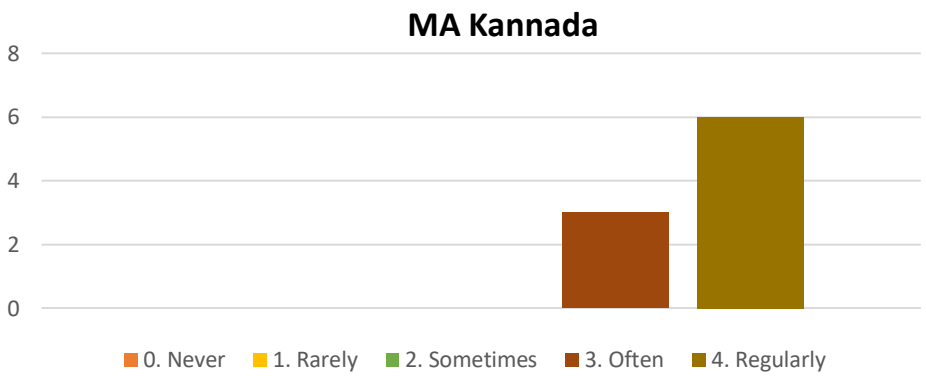
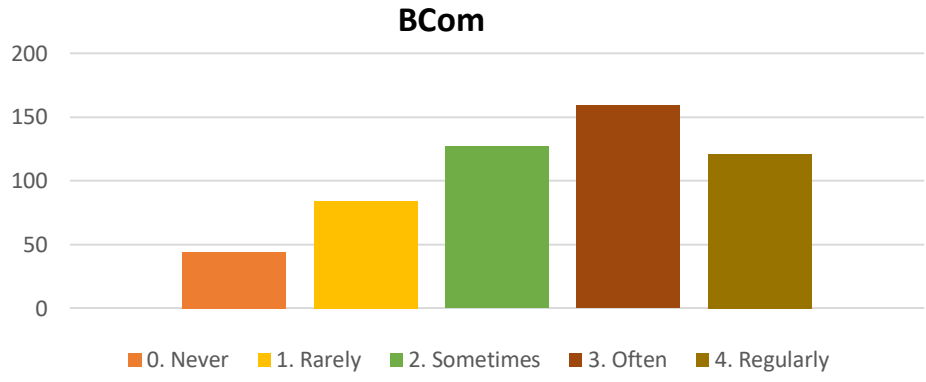
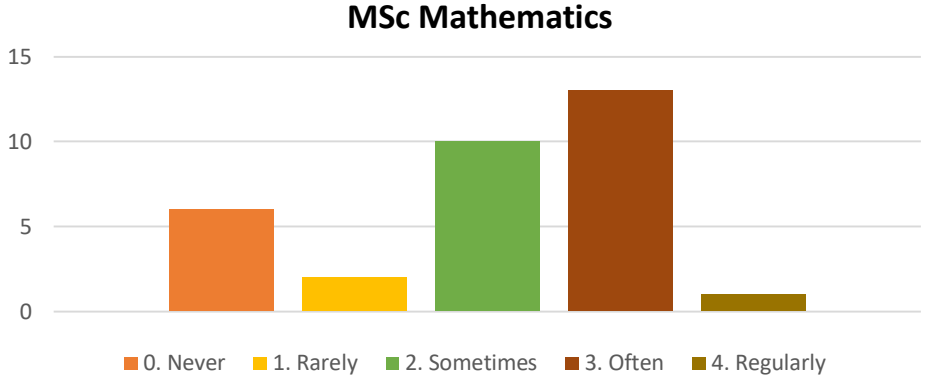
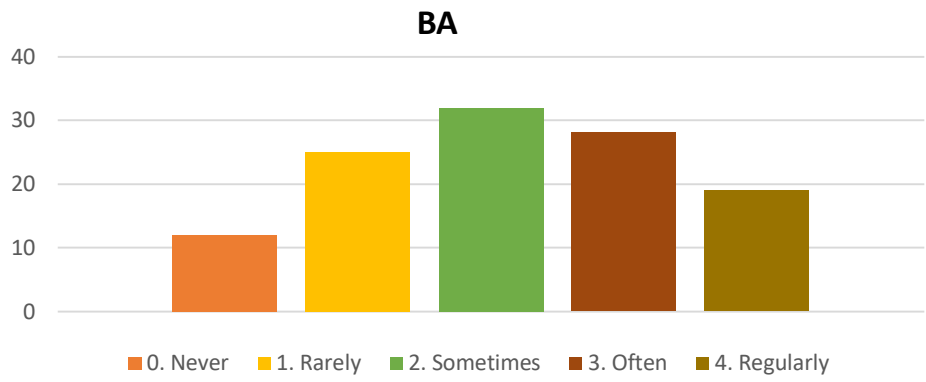
MA Kannada



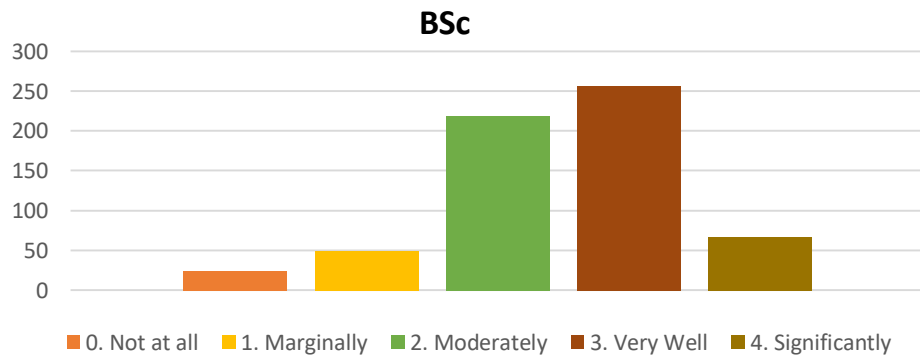
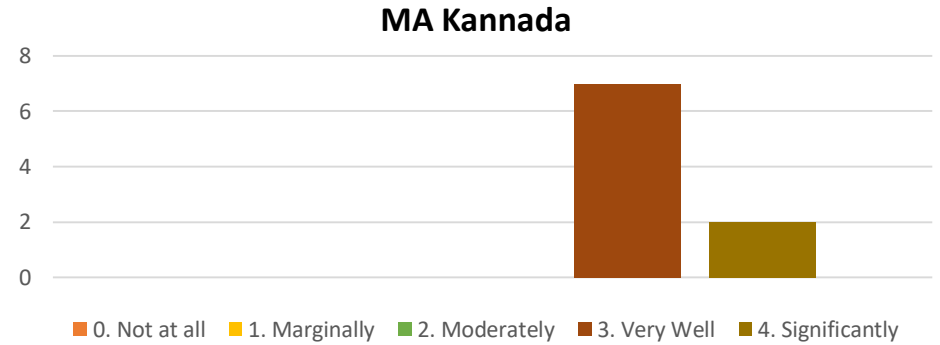
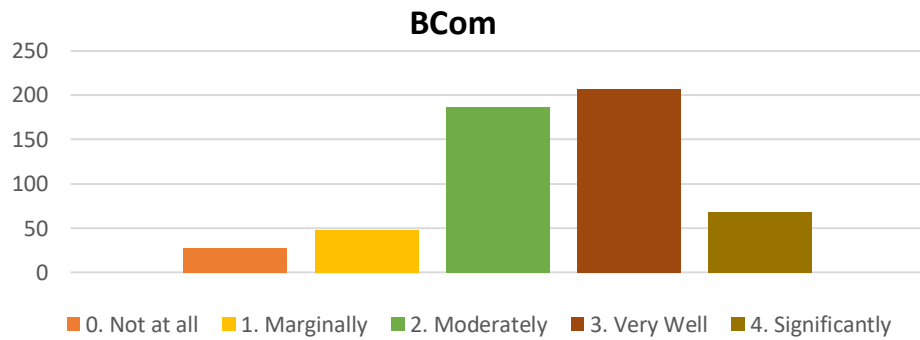
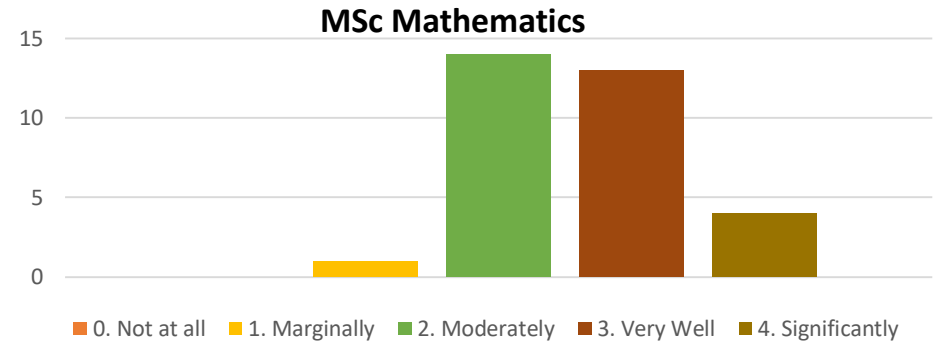
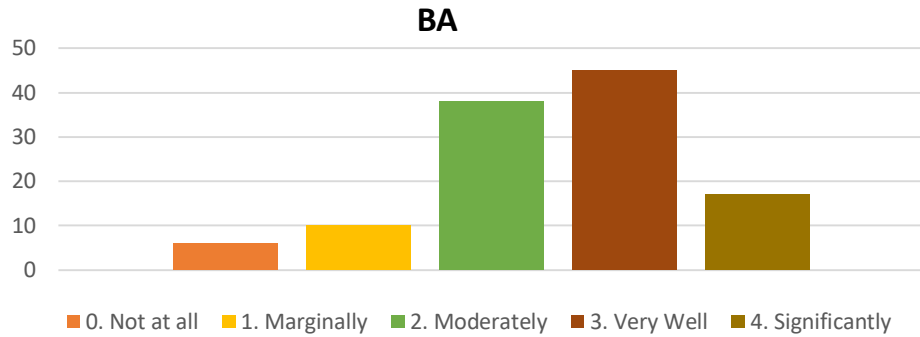
BSc



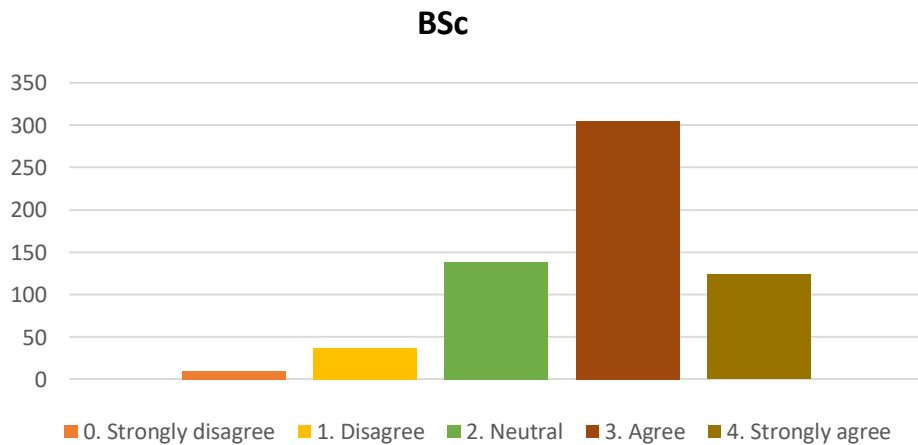
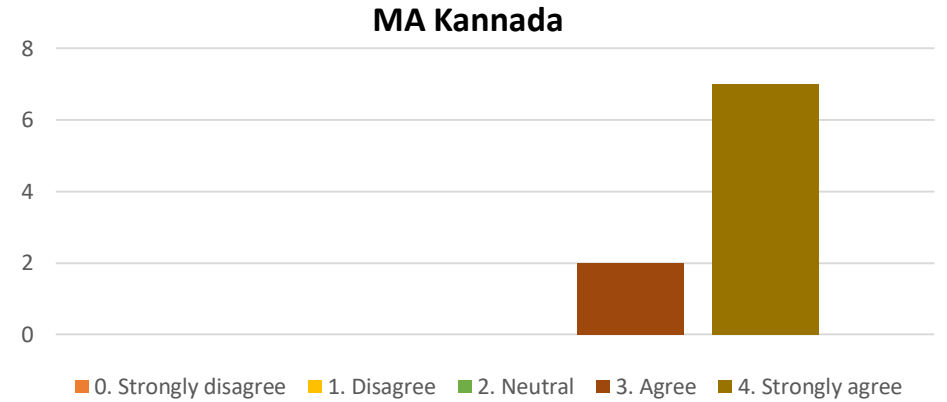
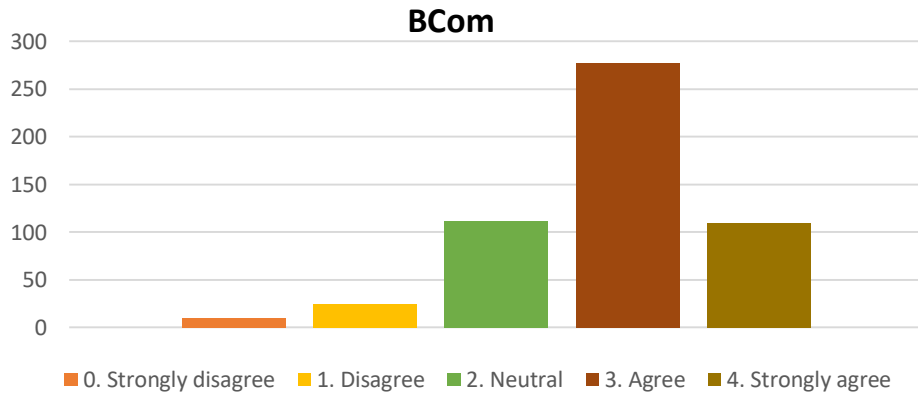
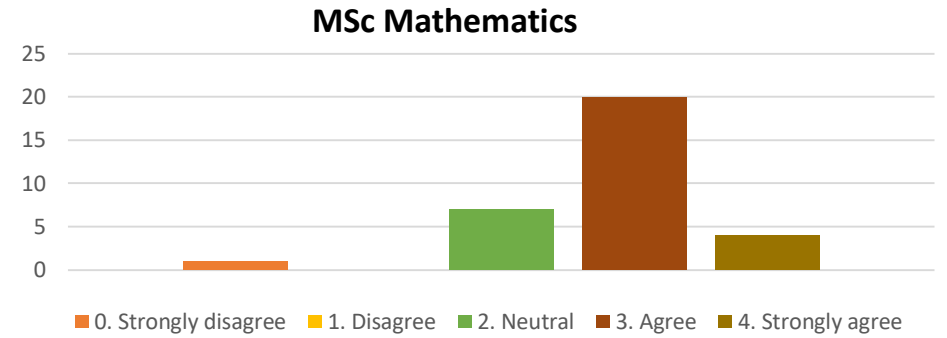
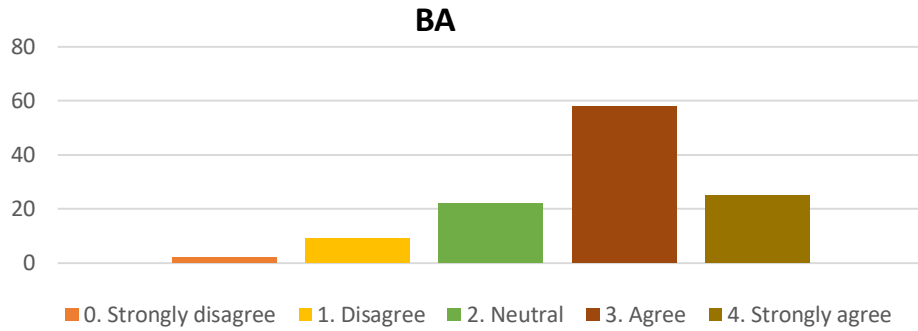
7) The institute takes active interest in promoting internship, student exchange, field visit opportunities for students.



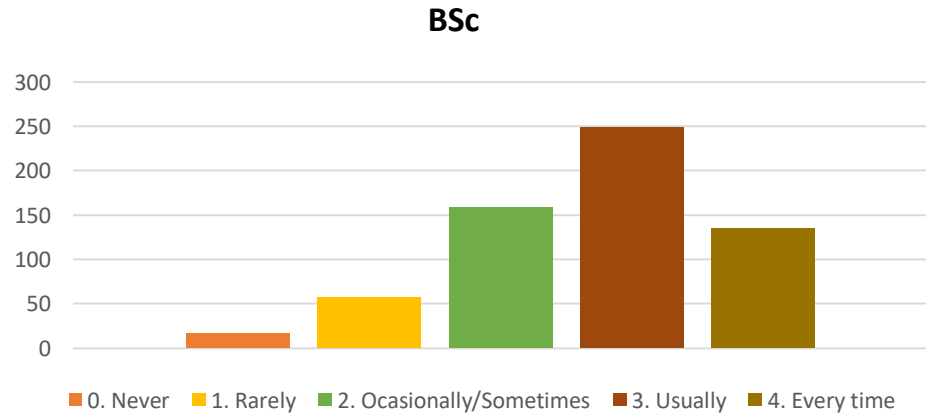
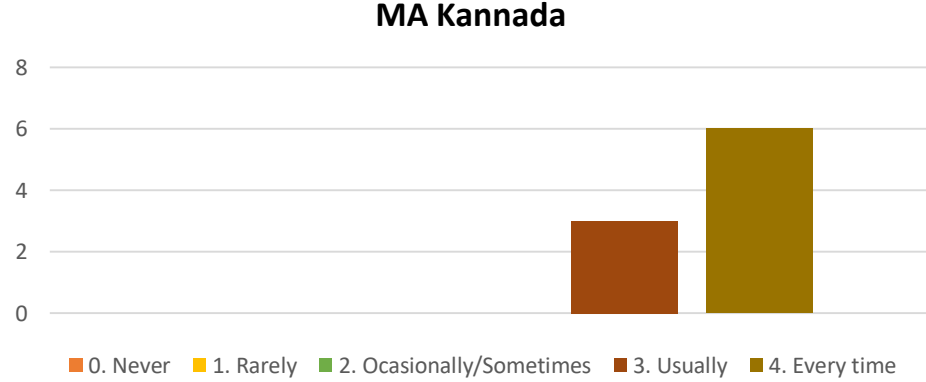
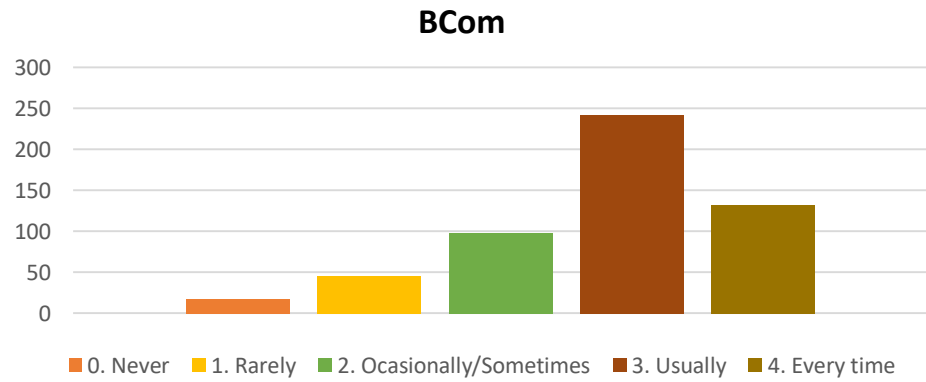
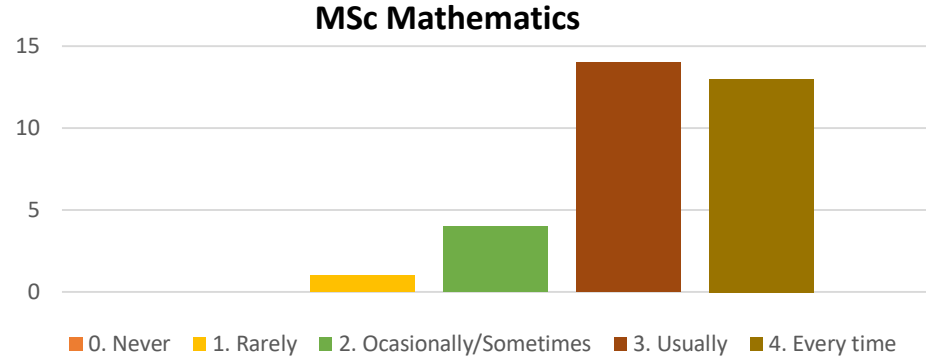
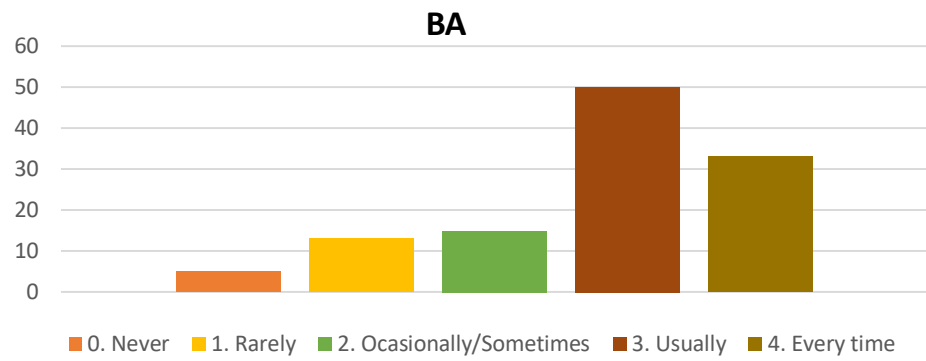
8) The teaching and mentoring process in your institution facilitates you in cognitive, social and emotional growth.



9) The institution provides multiple opportunities to learn and grow.

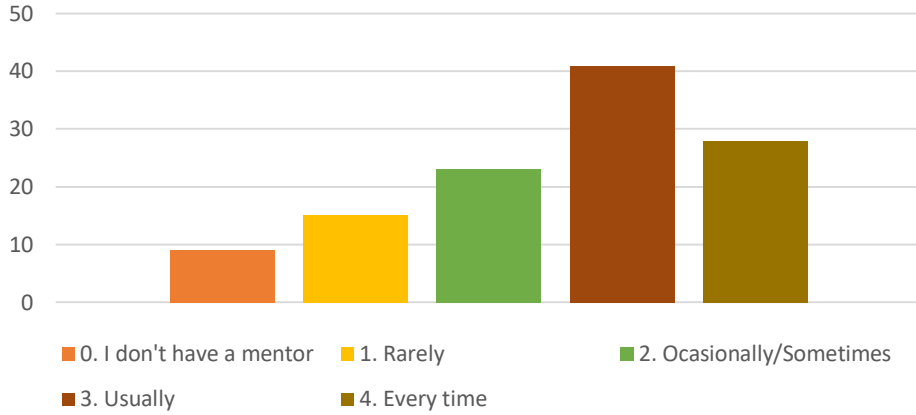


10) Teachers inform you about your expected competencies, course outcomes and programme outcomes.

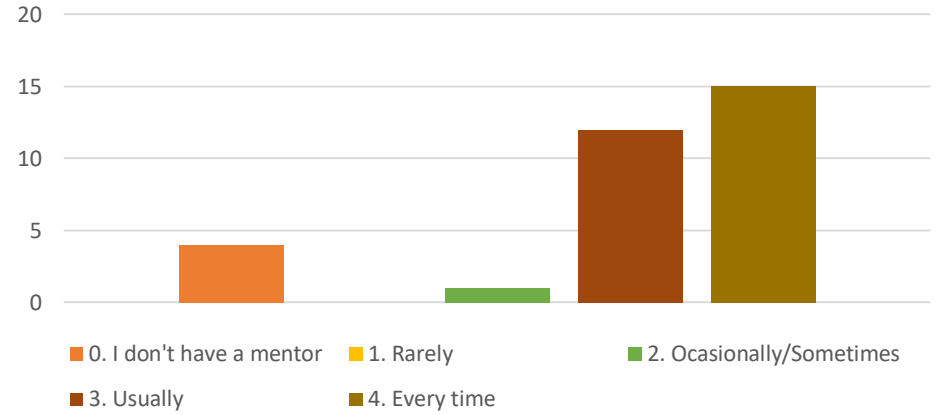


11) Your mentor does a necessary follow up with an assigned task to you.

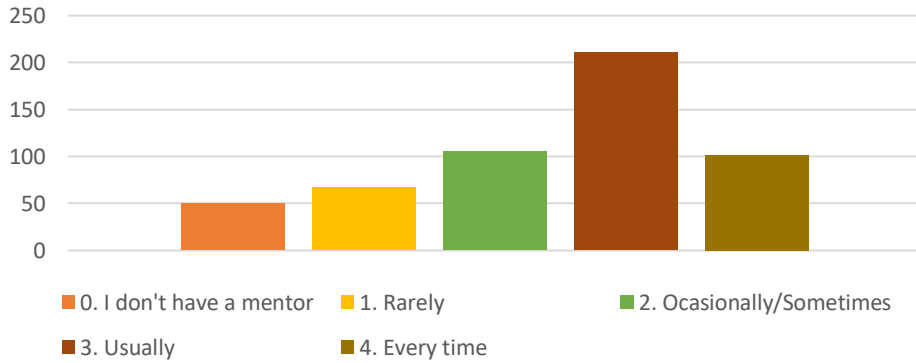
BA



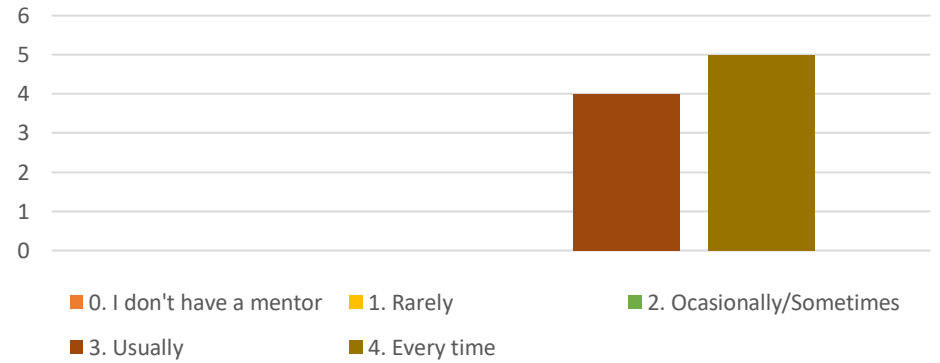
MSc Mathematics



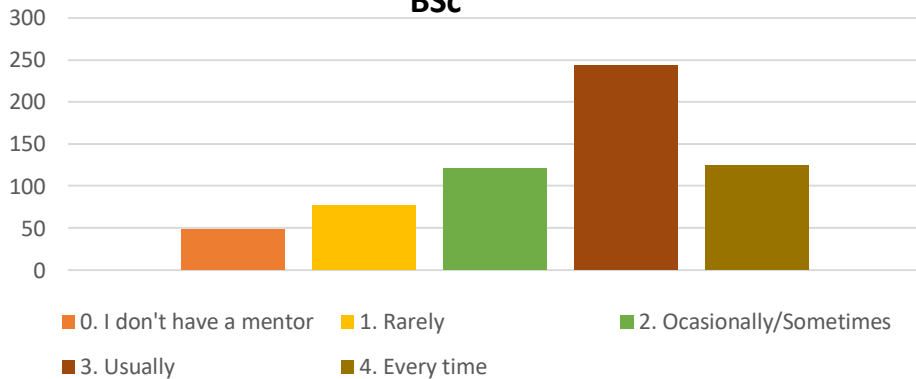
BCom



MA Kannada

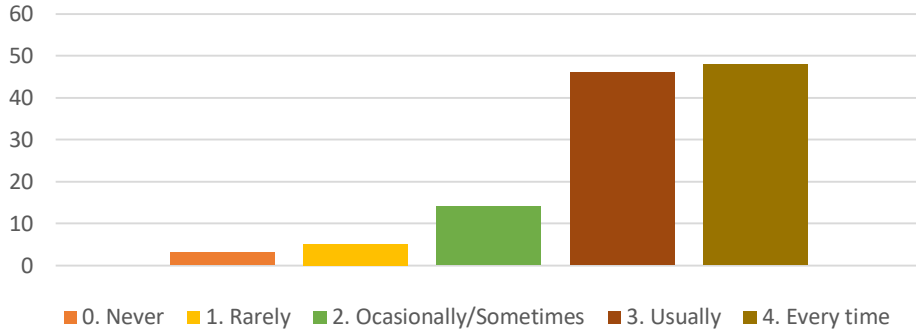


BSc

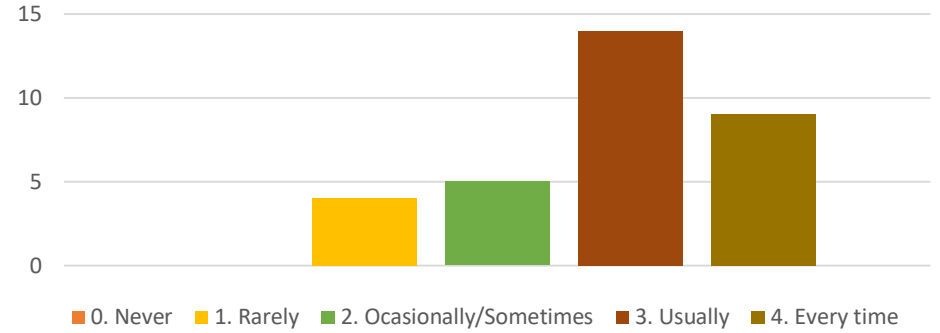


12) The teachers illustrate the concepts through examples and applications

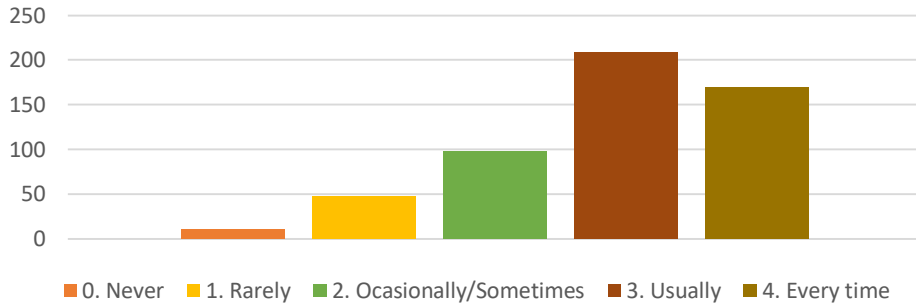
BA



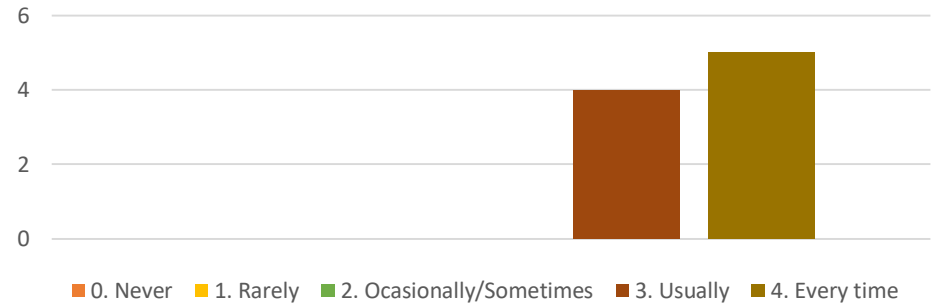
MSc Mathematics



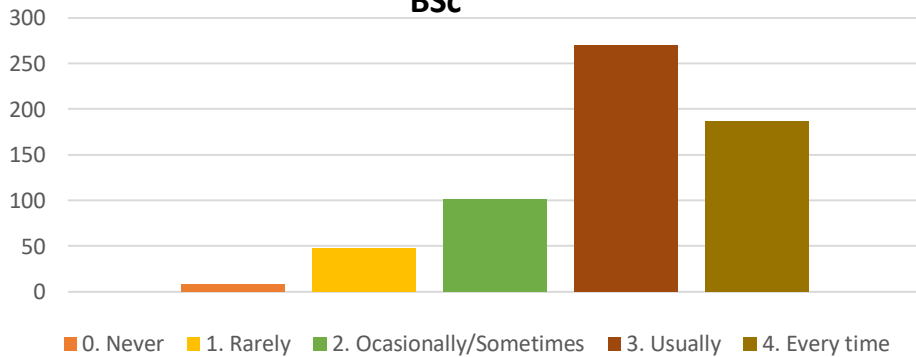
BCom



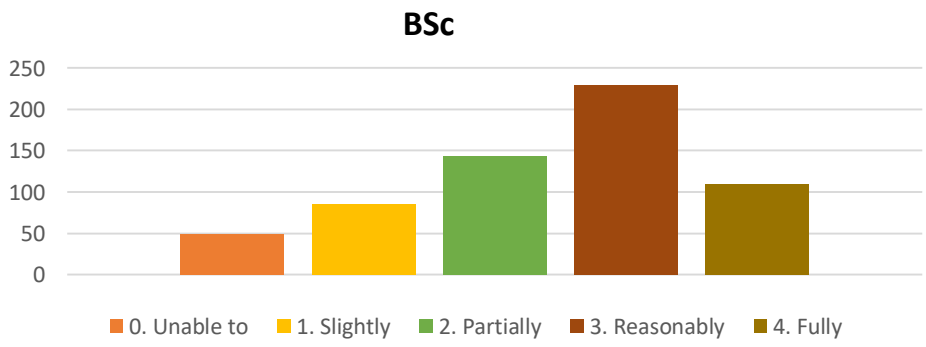
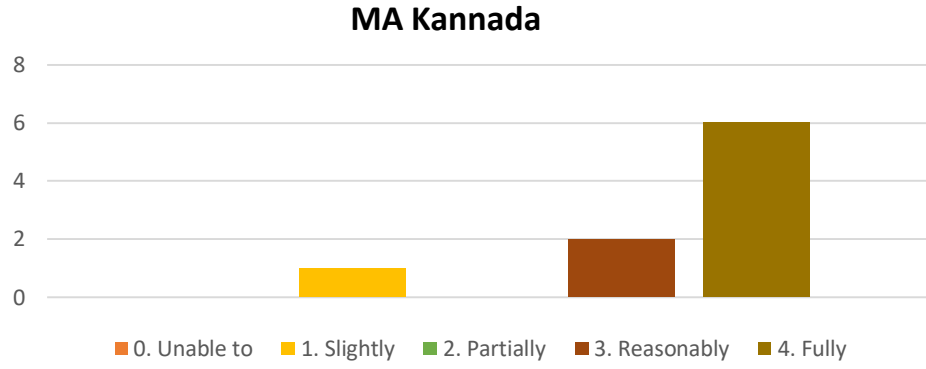
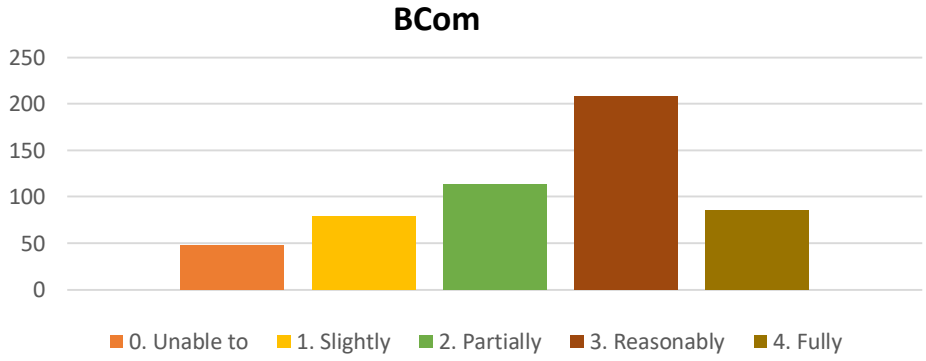
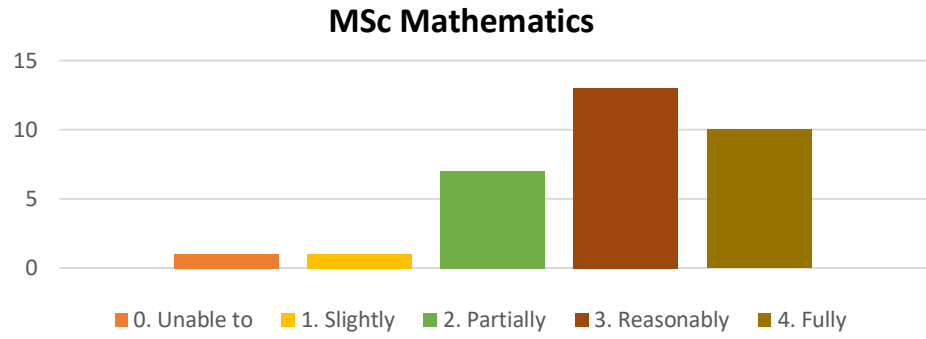
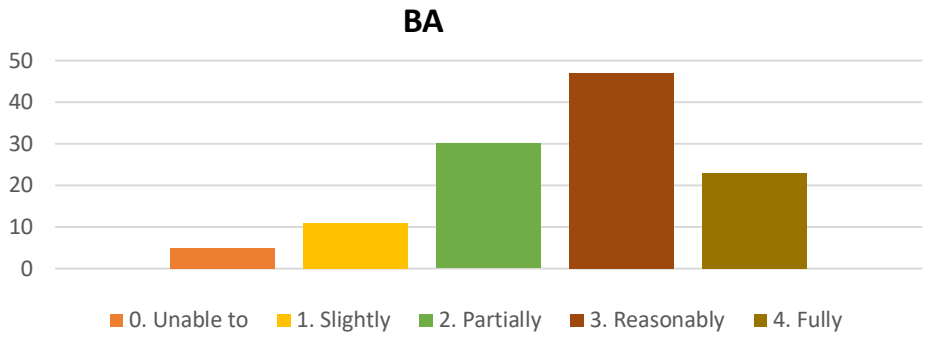
MA Kannada



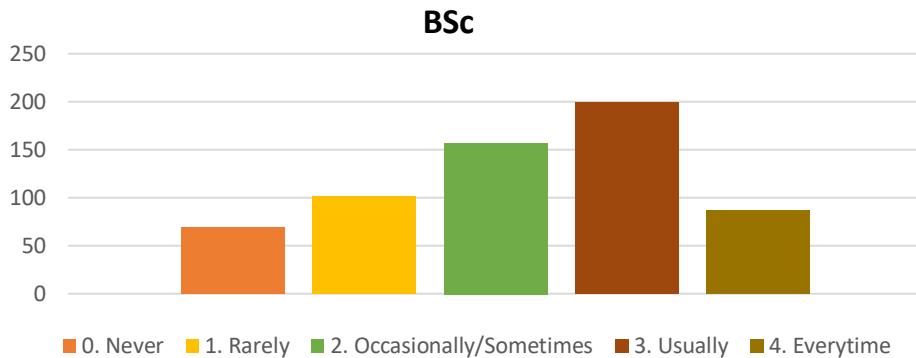
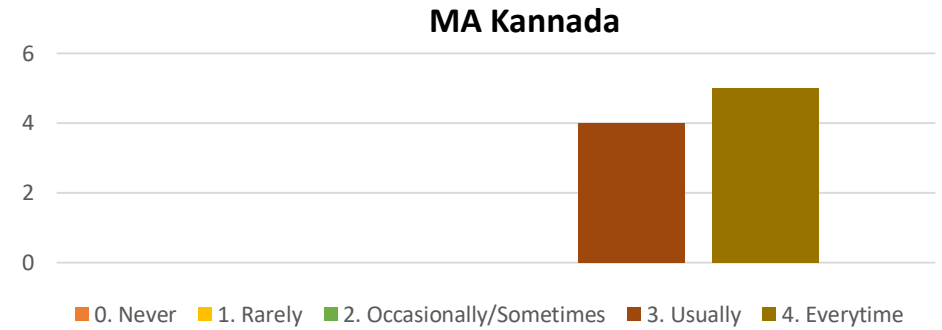
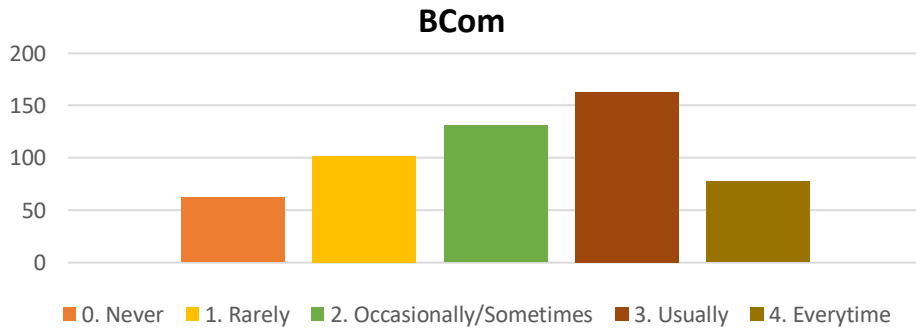
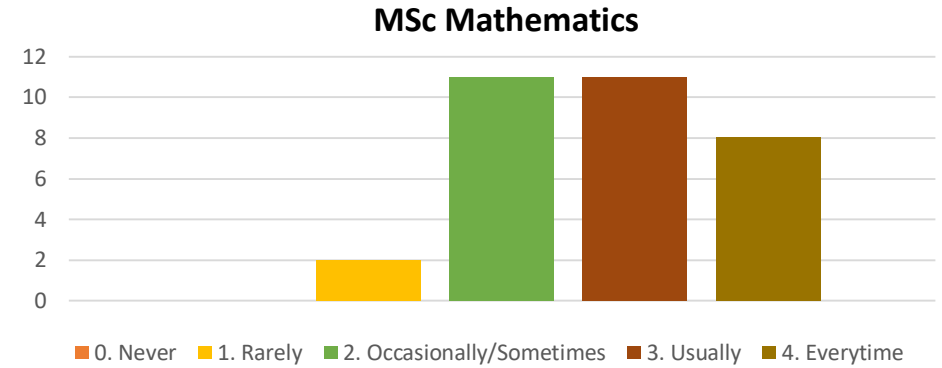
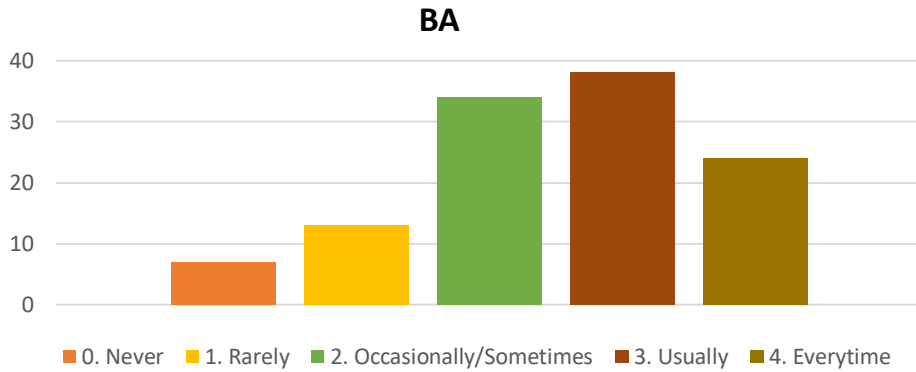
BSc



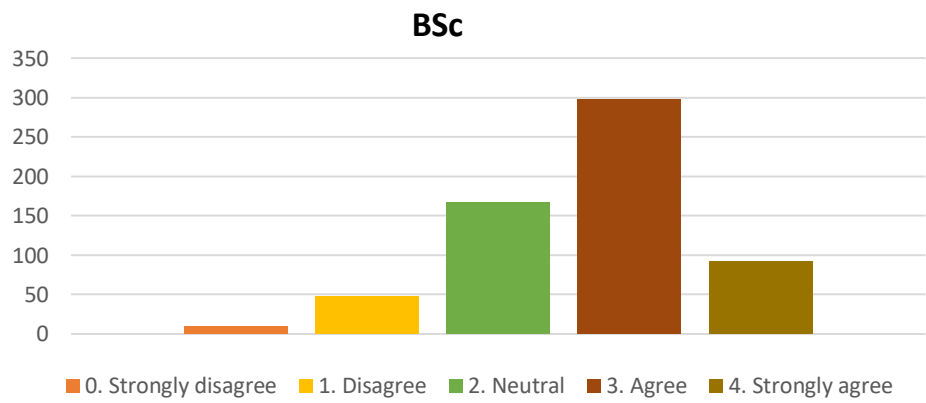
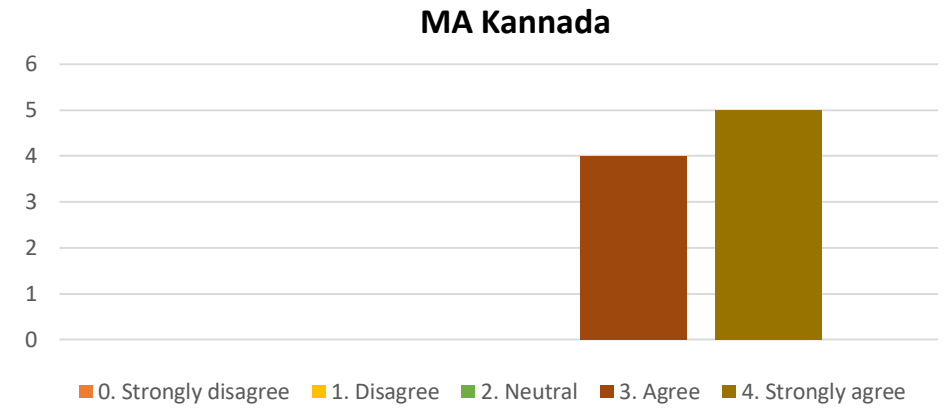
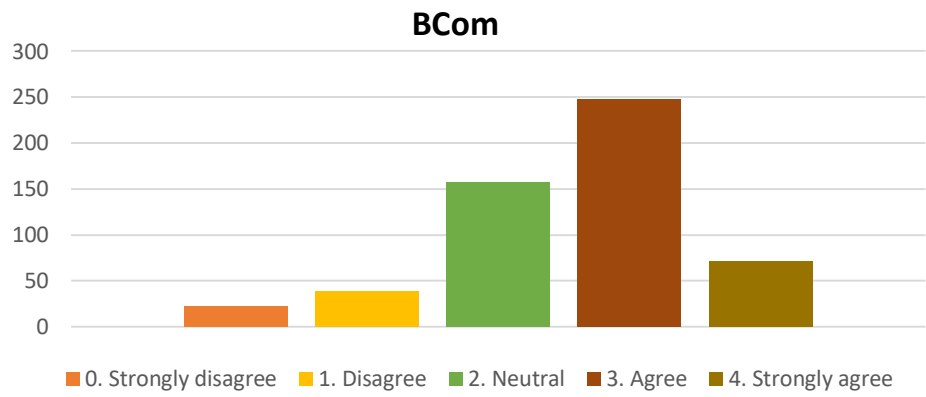
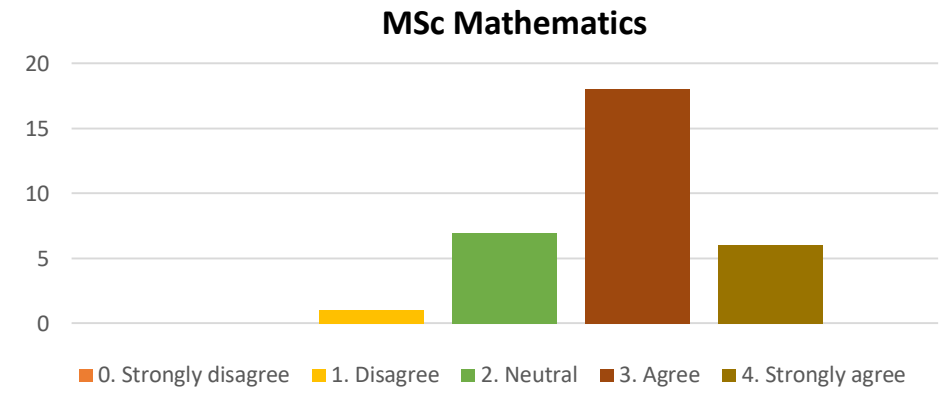
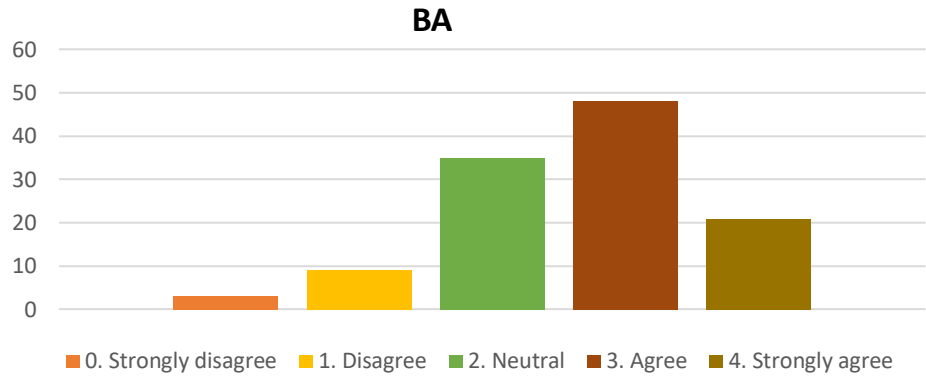
13) The teachers identify your strengths and encourage you with providing right level of challenges.



14) The teachers are able to identify your weakness and help you to overcome them.

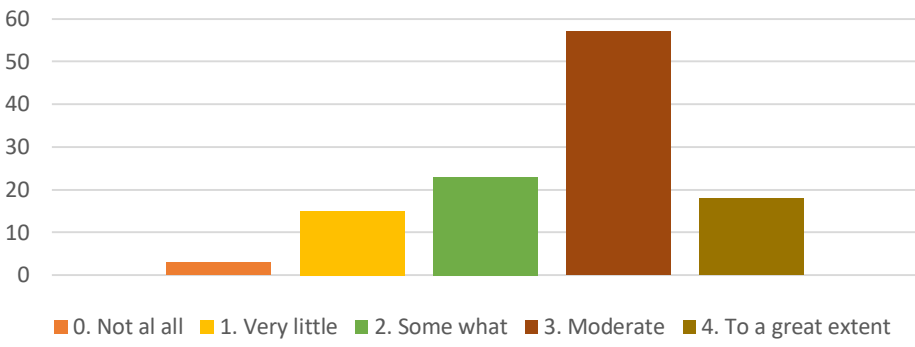


15) The institution makes effort to engage students in the monitoring, review and continuous quality improvement of the teaching learning process.

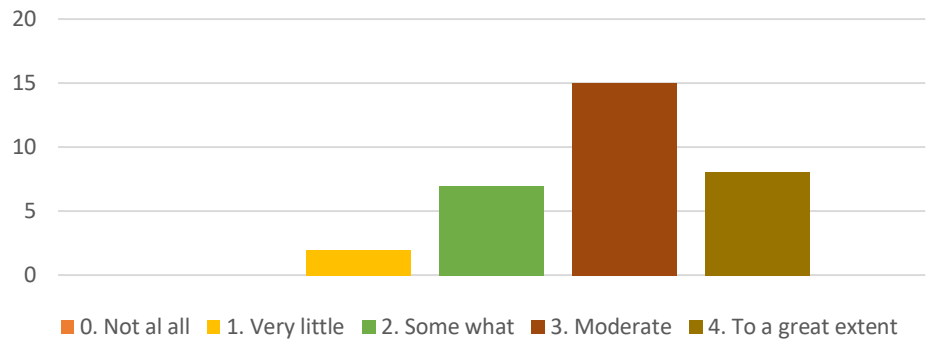


16) The institute/teachers use student centric methods, such as experimental learning, participative learning and problem-solving methodologies for enhancing learning experiences.

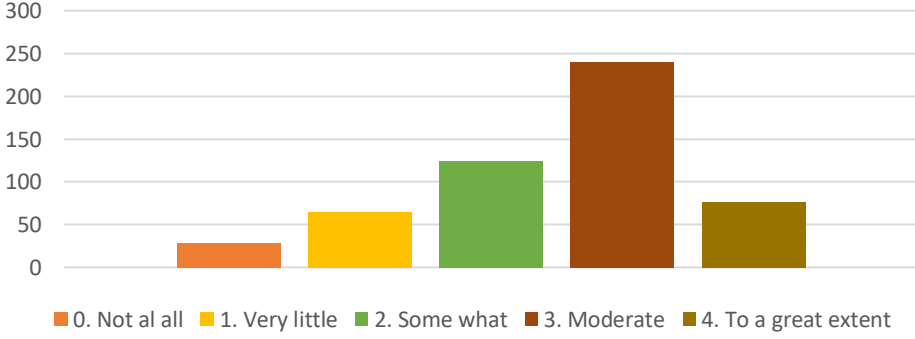
BA



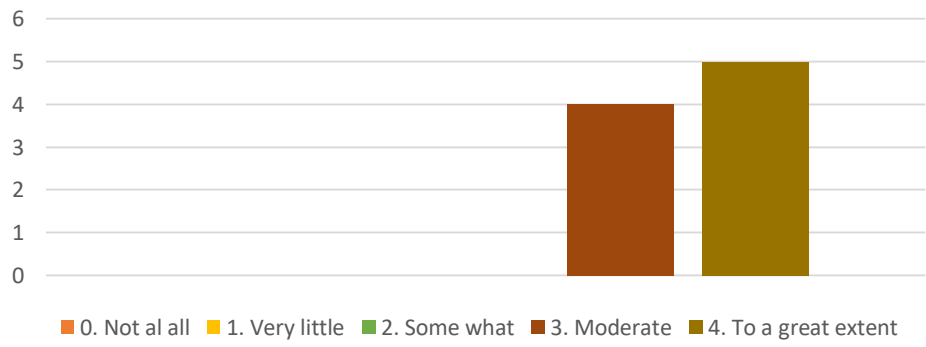
MSc Mathematics



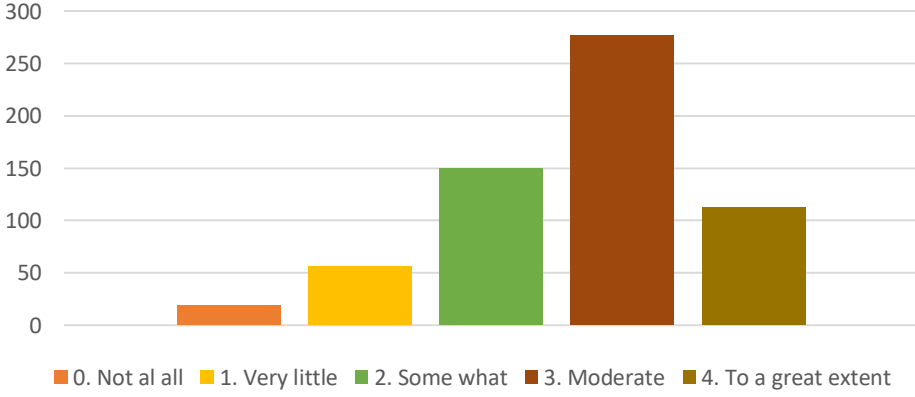
BCom



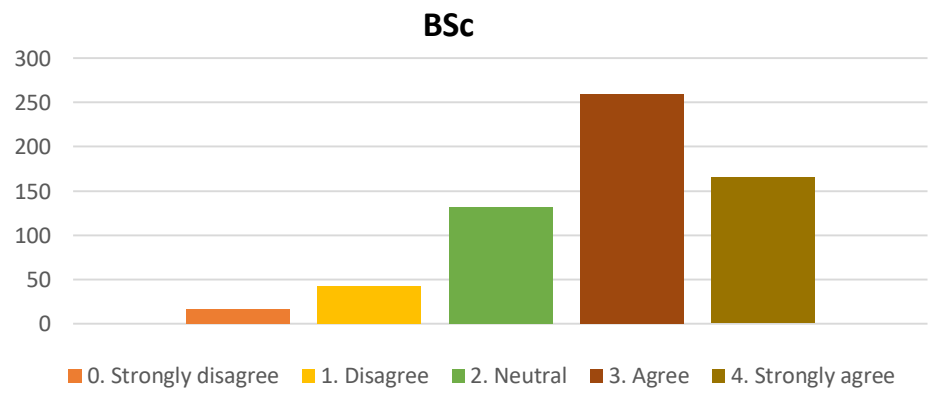
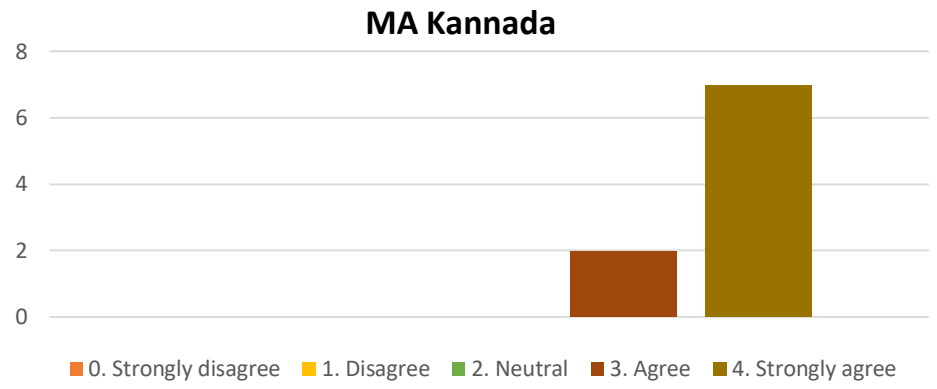
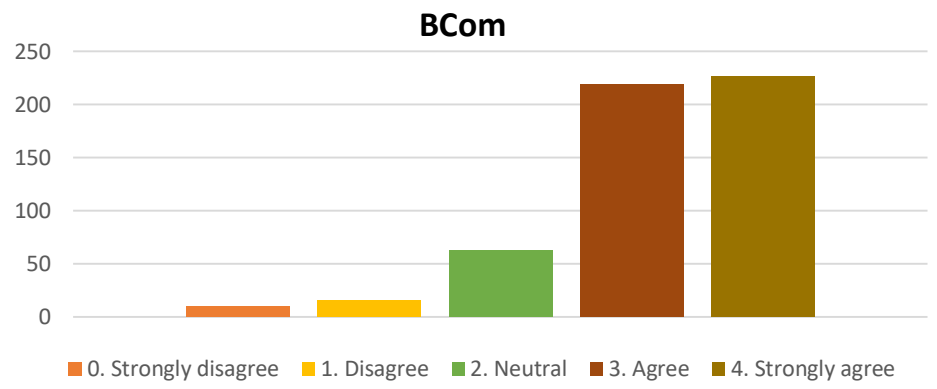
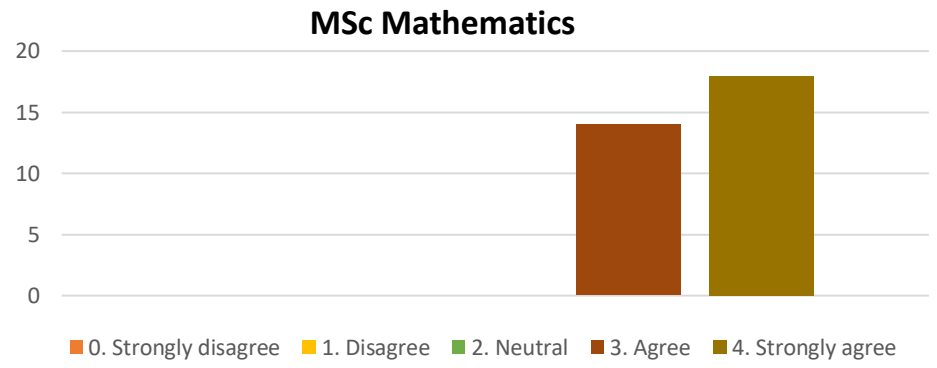
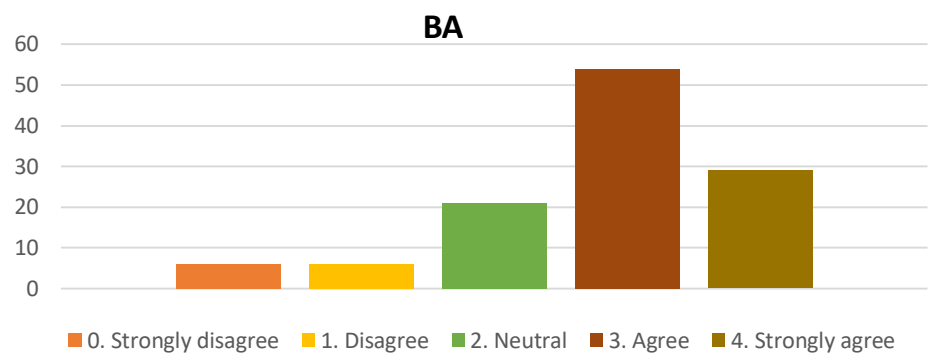
MA Kannada



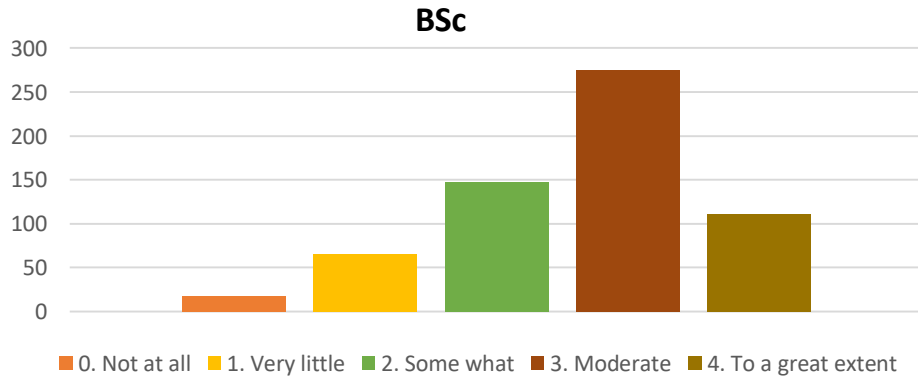
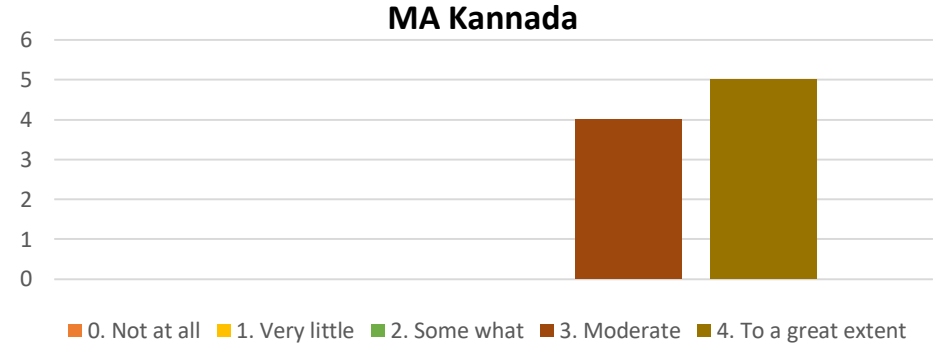
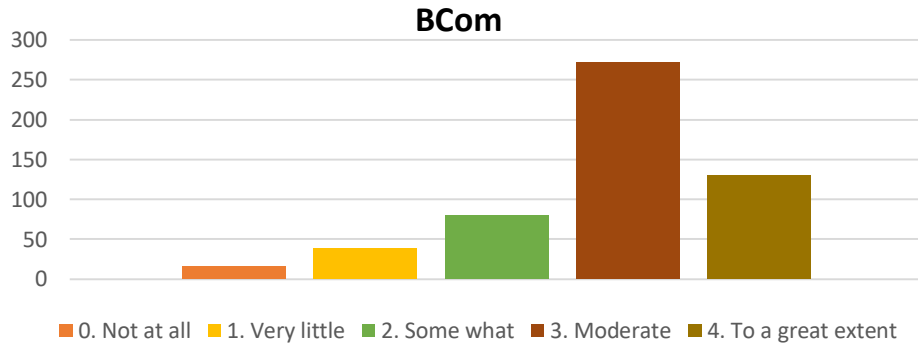
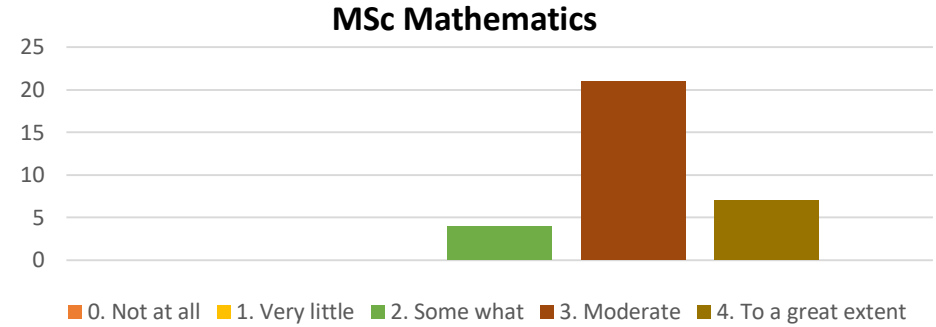
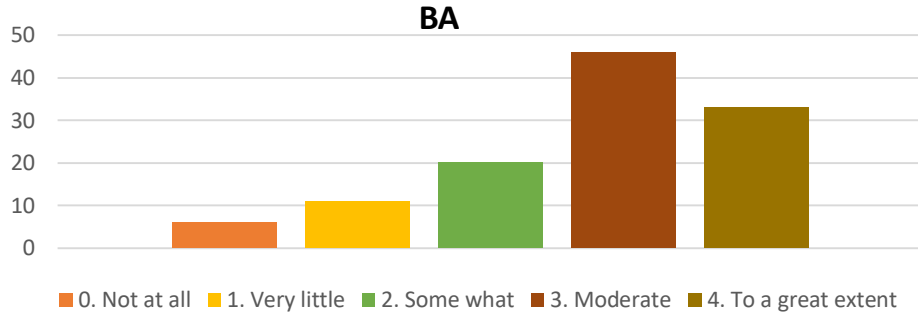
BSc



17) Teachers encourage you to participate in extracurricular activities.

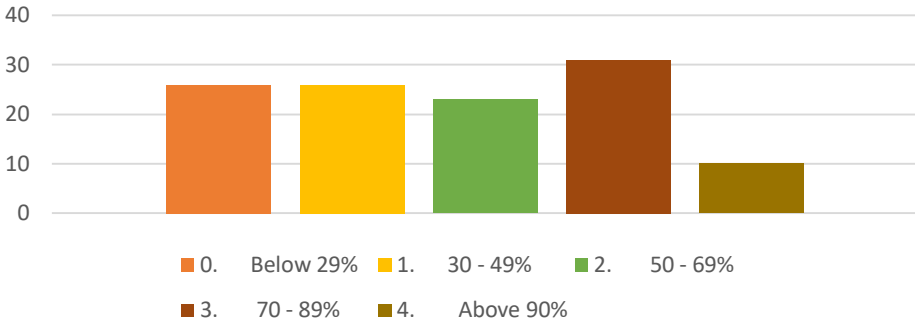


18) Efforts are made by the institute/teachers to inculcate soft skills, life skills and employability skills to make you ready for the world of work.

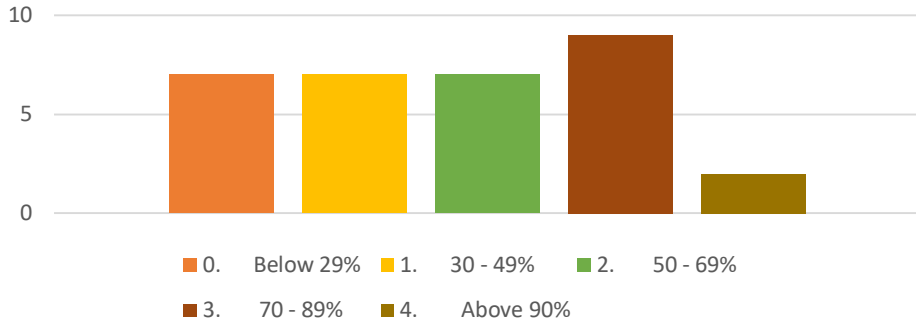


19) What percentage of teachers use ICT tools such as LCD projector, Multimedia, etc. while teaching.

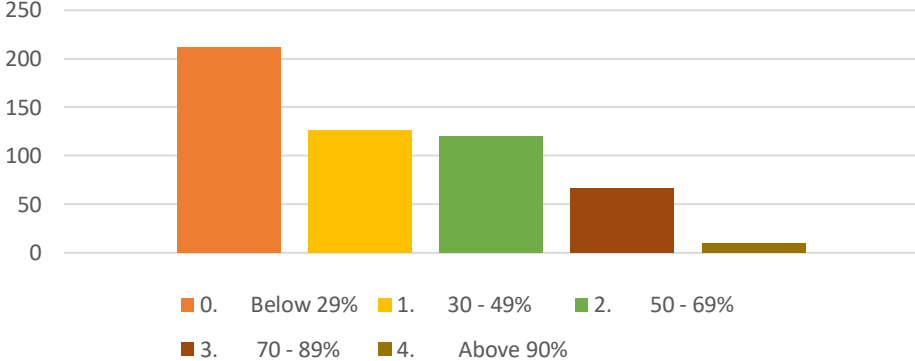
BA



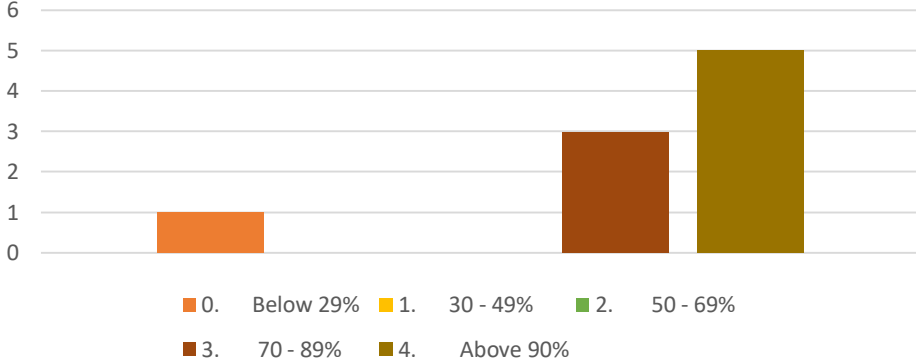
MSc Mathematics



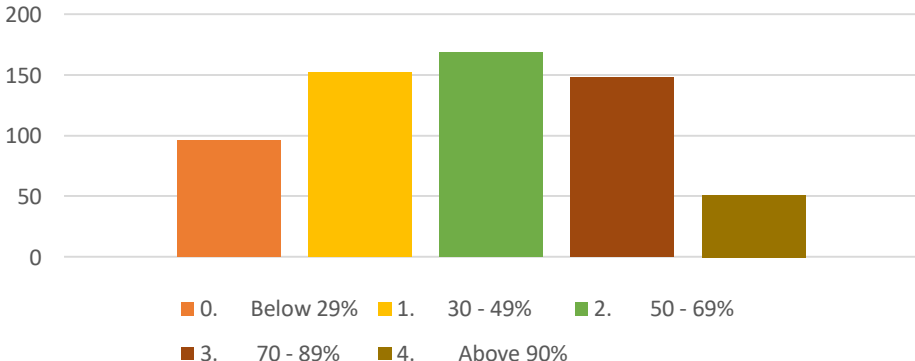
BCom



MA Kannada



BSc



20) The overall quality of teaching learning process in your institute is very good.

