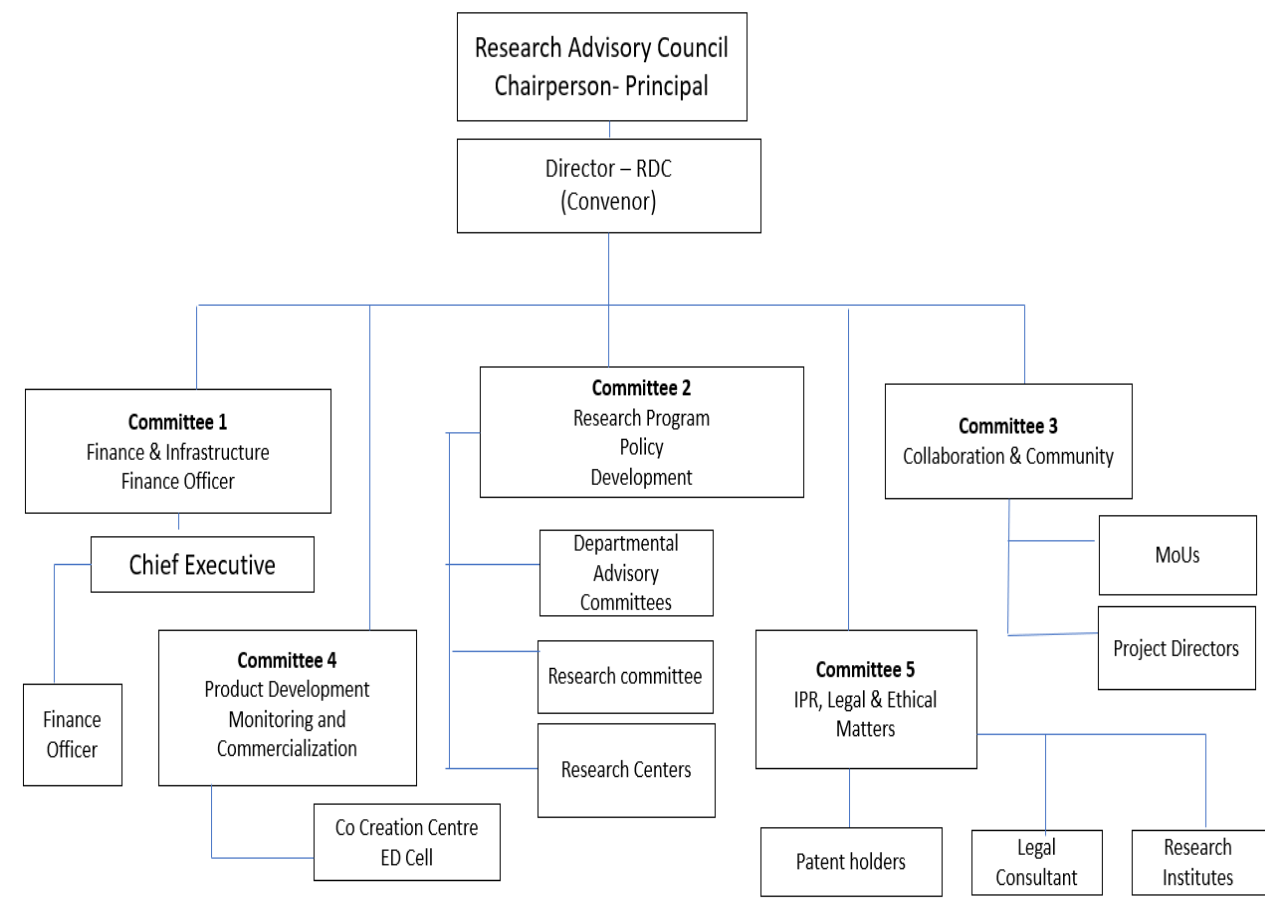


**MES College of Arts, Commerce and Science
Malleswaram, Bengaluru-03**

RESEARCH & DEVELOPMENT CELL



MES SHODH - Research and Development Cell

- **SHODH: Scholarly Hub of Discovery and Higher Learning**

Aims to provide a forum for inter disciplinary research in MES College of Arts, Commerce and Science

MISSION

- To create a conducive environment and ecosystem for inter disciplinary research
- To encourage research publications in reputed journals
- To encourage collaboration across institutions, industry, government, community- based organizations, and agencies at the local, national, and international levels.
- To facilitate greater access to research through mobilization of resources and funding

SHODH- Research and Development Cell in MES

- Research is a foundation of knowledge creation and innovation in society. Higher Education Institutions (HEIs), play a pivotal role in advancing scientific, technological, social, and cultural frontiers. In a rapidly evolving global landscape, research within HEIs is not only a measure of academic excellence but also a driver of national development and global competitiveness. A vibrant research ecosystem in HEI aims to provide meaningful thrust for sustainable research and innovation.
- UGC has recognized the role of HEIs in knowledge creation and has placed its objectives for Establishment of Research & Development Cell in Higher Education Institutions.
- Faculty of MES College have got funding for research projects from UGC, VGST for major and minor projects
- Two faculty members of Physics department D. Usharani and K M Raghavendran were sanctioned a grant of Rs.40,000 /- each by VGST for SCIENCE PROJECTS IN COLLEGE EDUCATION (SPICE) in 2013 and 2014 respectively.
- The management of MES has been encouraging research activities by provisioning a budget under the head – Research and Development, initiated by faculty and students.
- The college provides a conducive atmosphere to promote research.
- There are two Research Centres: one in Applied Mathematics and the other in Kannada. Three staff members (one UG and two PG) are university-recognised research guides.
- Seven research scholars registered under the research centre in Applied Mathematics were awarded Ph. D from BU, 3 research scholars were awarded Ph. D from BCU under the guidance of Dr. Achala L Nargund, since its establishment in the college. Currently 2

students are pursuing Ph.D. in Mathematics and 2 students are pursuing Ph.D. in Kannada, under the supervision of the research guides in the respective research centres.

- The research centre has been sanctioned funds for 3 major projects. A grant of Rs. 30 Lakhs from VGST in 2019, Rs. 3.84 Lakhs from DST in 2010 and 20 Lakhs from UGC in 2010. Three UGC minor research projects Rs. 2 Lakhs each were funded in the 2013-14.
- During last five years, faculty members have 125 publications in International and National journals which include 95 publications in UGC recognized journals including Scopus index journals.
- International and National conferences, workshops and various research training programs have been organized by the college as research initiatives.
- Around 38 participations have been recorded in International and National conferences. Staff members have contributed in around 50 books as authors or through edited chapters. The college PG department has published 6 issues of bi-annual in-house publication.
- The PG departments have guided students for dissertation projects for MSc and MA Kannada. Five out of these project works have been published in Mathematics journals.
- Research scholars who pursue Ph.D in the research centres of our institution are given a stipend of Rs.5000 per month for the first year (after the completion of course work) and subsequently Rs. 10,000 per month.

SHODH will strive for:

- Knowledge creation through original investigations and scholarly activity
- Building a policy-based research ecosystem in key areas/domains
- Adhering to the policies and guidelines to promote interdisciplinary research
- Capacity building through Training programs, faculty development initiatives
- Promotion of research mentorships through collaborations
- Ensuring 'Infrastructure-sharing' for optimal utilization of resources
- Fostering an environment of inquiry, and academic freedom
- Research funding through grants, fellowships, and infrastructure development.
- Leveraging on Digital platforms publishing and disseminating research findings widely
- Upholding Research 'publication –integrity' and Ethics



MES COLLEGE OF ARTS, COMMERCE AND SCIENCE

Affiliated to Bengaluru City University & Reaccredited by NAAC-Grade 'A' (4th Cycle)

'Vidyasagara' Prof. M.P.L. Sastry Road (15th Cross), Malleswaram, Bengaluru - 560 003.

Phone : 080-23341225 / 080-23347045

website : www.mesacs.in

Email: mesdegrecollege@gmail.com, pgdeptmes@gmail.com

POST GRADUATE DEPARTMENT OF MATHEMATICS & RESEARCH CENTRE IN APPLIED MATHEMATICS

COMPOSITION OF RESEARCH ADVISORY COMMITTEE

With effect from 20/06/2025

Sl. No.	Name of the Faculty	Designation
1.	Dr. D. Usharani Principal, Professor M E S College of Arts, Commerce and Science	Chairman
2.	Dr. Asha C. S. Head and Coordinator Post Graduate Department of Mathematics and Research Centre in Applied Mathematics M E S College of Arts, Commerce and Science	Coordinator
3	Dr. Dinesh P. A. Professor Department of Mathematics Ramaiah Institute of Technology	External Research Advisor
4	Dr. Medha Itagi Huilgol Chairman, Professor Department of Mathematics Bengaluru City University	Internals Research Advisor
5	Dr. Tejuswini M. Assistant Professor, Post Graduate Department of Mathematics and Research Centre in Applied Mathematics M E S College of Arts, Commerce and Science	Member

D. Usharani
20.06.2025
PRINCIPAL

MES COLLEGE OF ARTS, COMMERCE & SCIENCE
15th Cross, Malleswaram, BENGALURU-560003



M.E.S. COLLEGE OF ARTS, COMMERCE & SCIENCE

Affiliated to Bengaluru City University & Reaccredited by NAAC - Grade 'A' (4th Cycle)

'Vidyasagara' Prof. M.P.L. Sastry Road (15th Cross), Malleswaram, Bengaluru - 560 003.

Phone : 080-2334 1225 / 080-2334 7045

Website : www.mesacs.in

E-mail : mesdegreecollege@gmail.com

ಕನ್ನಡ ಸ್ನಾತಕೋತ್ತರ ವಿಭಾಗ

ವಿಭಾಗದ ಸಲಹಾ ಸಮಿತಿಯ ರಚನೆ

ಜೂನ್ 2025 ರಿಂದ ಅನ್ವಯ

ಕ್ರಮ ಸಂಖ್ಯೆ	ಅಧ್ಯಾಪಕರ ಹೆಸರು	ಹುದ್ದೆ
1	ಡಾ. ಡಿ. ಉಷಾರಾಣಿ ಪ್ರಾಂಶುಪಾಲರು, ಎಂ.ಇ.ಎಸ್ ಕಾಲೇಜು	ಅಧ್ಯಕ್ಷರು
2	ಡಾ. ರಾಮಕೃಷ್ಣಯ್ಯ. ಎಂ ಮುಖ್ಯಸ್ಥರು, ಕನ್ನಡ ಸ್ನಾತಕೋತ್ತರ ವಿಭಾಗ, ಎಂ.ಇ.ಎಸ್ ಕಾಲೇಜು	ಸಂಚಾಲಕರು
3	ಡಾ. ಡೊಮಿನಿಕ್ ಪ್ರಾಧ್ಯಾಪಕರು ಮತ್ತು ಮುಖ್ಯಸ್ಥರು, ಕನ್ನಡ ಅಧ್ಯಯನ ಕೇಂದ್ರ, ಬೆಂ. ವಿ. ವಿ	ಬಾಹ್ಯ ಸದಸ್ಯರು
4	ಡಾ. ವಾಣಿಶ್ರೀ ಬಿ.ಎಂ ಕನ್ನಡ ವಿಭಾಗ, ಎಂ.ಇ.ಎಸ್ ಕಾಲೇಜು	ಆಂತರಿಕ ಸದಸ್ಯರು

PRINCIPAL

M E S COLLEGE OF ARTS, COMMERCE & SCIENCE

15th Cross, Malleswaram, BENGALURU-560003